

### GENERAL

The sprayhead cleaning tool should be used regularly to clean the sprayhead and sprayhead fitting to prevent lime scale buildup. It is intended for use with all style sprayheads used on BUNN equipment.

### SPRAYHEAD CLEANING

1. Remove the brew funnel and decanter/dispenser.
2. Remove the sprayhead.
3. Insert the sprayhead cleaning tool into the sprayhead tube as shown in Fig 1, and rotate to clean.
4. Insert the pointed end of the sprayhead cleaning tool into the bypass port or vent as shown in Fig 2, and rotate to clean.
5. Replace the brew funnel and decanter/dispenser. Run a brew cycle to rinse the spray head tube.
6. Clean the sprayhead openings with the sprayhead cleaning tool (Fig 3, 4, 5), then rinse sprayhead with water.
7. Remove the funnel, and re-install the sprayhead. Replace funnel.



FIG 1



FIG 2

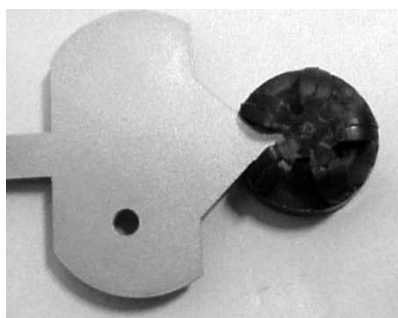


FIG 3



FIG 4



FIG 5

## BUNN-O-MATIC CORPORATION

POST OFFICE BOX 3227  
SPRINGFIELD, ILLINOIS 62708-3227  
PHONE: (217) 529-6601 FAX: (217) 529-6644

