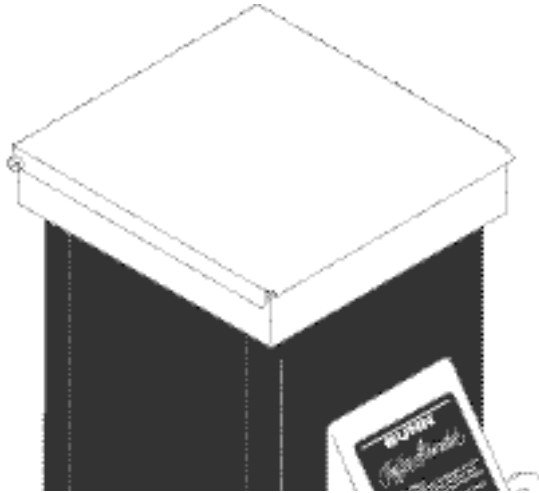
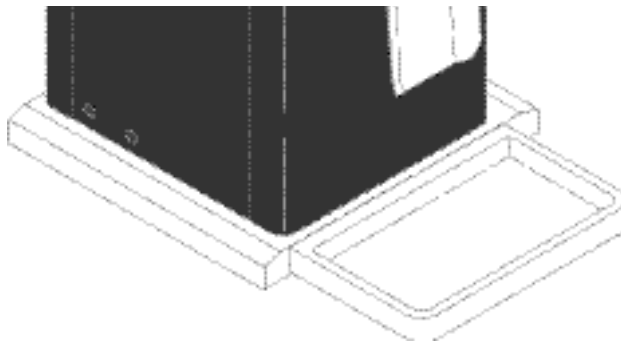


# **BUNN**®

# ***HIGH VOLUME GRINDER***



**DISCONTINUED VERSION**  
**Parts listed in this catalog  
may no longer be available.**



## **ILLUSTRATED PARTS CATALOG**

Designs, materials, weights, specifications, and dimensions for equipment or replacement parts are subject to change without notice.

**BUNN-O-MATIC CORPORATION**

POST OFFICE BOX 3227

SPRINGFIELD, ILLINOIS 62708-3227

PHONE: (217) 529-6601 FAX: (217) 529-6644

[www.bunnomatic.com](http://www.bunnomatic.com)

## WARRANTY

Bunn-O-Matic Corp. ("Bunn") warrants the equipment manufactured by it to be commercially free from defects in material and workmanship existing at the time of manufacture and appearing within one year from the date of installation. In addition:

1.) Bunn warrants electronic circuit and/or control boards to be commercially free from defects in material and workmanship for two years from the date of installation.

2.) Bunn warrants the compressor on refrigeration equipment to be commercially free from defects in material and workmanship for two years from the date of installation.

3.) Bunn warrants that the grinding burrs on coffee grinding equipment will grind coffee to meet original factory screen sieve analysis for three years from date of installation or for 30,000 pounds of coffee, whichever comes first.

This warranty does not apply to any equipment, component or part that was not manufactured by Bunn or that, in Bunn's judgement, has been affected by misuse, neglect, alteration, improper installation or operation, improper maintenance or repair, damage or casualty.

**THE FOREGOING WARRANTY IS EXCLUSIVE AND IS IN LIEU OF ANY OTHER WARRANTY, WRITTEN OR ORAL, EXPRESS OR IMPLIED, INCLUDING, BUT NOT LIMITED TO, ANY IMPLIED WARRANTY OF EITHER MERCHANTABILITY OR FITNESS FOR A PARTICULAR PURPOSE.** The agents, dealers or employees of Bunn are not authorized to make modifications to this warranty or to make additional warranties that are binding on Bunn. Accordingly, statements by such individuals, whether oral or written, do not constitute warranties and should not be relied upon.

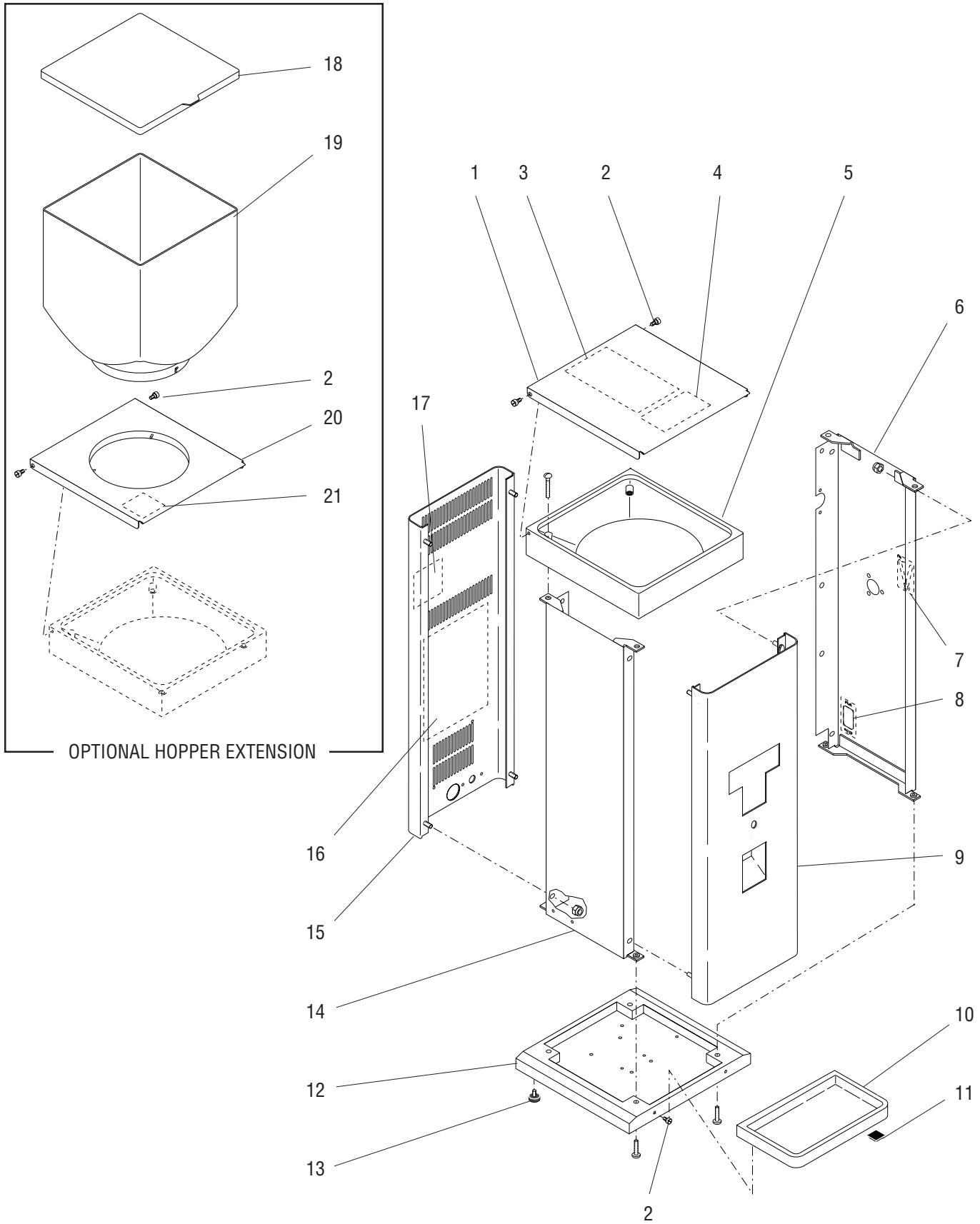
The Buyer shall give Bunn prompt notice of any claim to be made under this warranty by telephone at (217) 529-6601 or by writing to Post Office Box 3227, Springfield, Illinois, 62708-3227. If requested by Bunn, the Buyer shall ship the defective equipment prepaid to an authorized Bunn service location. If Bunn determines, in its sole discretion, that the equipment does not conform to the warranty, Bunn shall repair the equipment with no charge for parts during the warranty period and no charge for labor by a Bunn Authorized Service Representative during the warranty period. If Bunn determines that repair is not feasible, Bunn shall, at its sole option, replace the equipment or refund the purchase price for the equipment.

**THE BUYER'S REMEDY AGAINST BUNN FOR THE BREACH OF ANY OBLIGATION ARISING OUT OF THE SALE OF THIS EQUIPMENT, WHETHER DERIVED FROM WARRANTY OR OTHERWISE, SHALL BE LIMITED, AS SPECIFIED HEREIN, TO REPAIR OR, AT BUNN'S SOLE OPTION, REPLACEMENT OR REFUND.**

In no event shall Bunn be liable for any other damage or loss, including, but not limited to, lost profits, lost sales, loss of use of equipment, claims of Buyer's customers, cost of capital, cost of down time, cost of substitute equipment, facilities or services, or any other special, incidental or consequential damages.

# TABLE OF CONTENTS

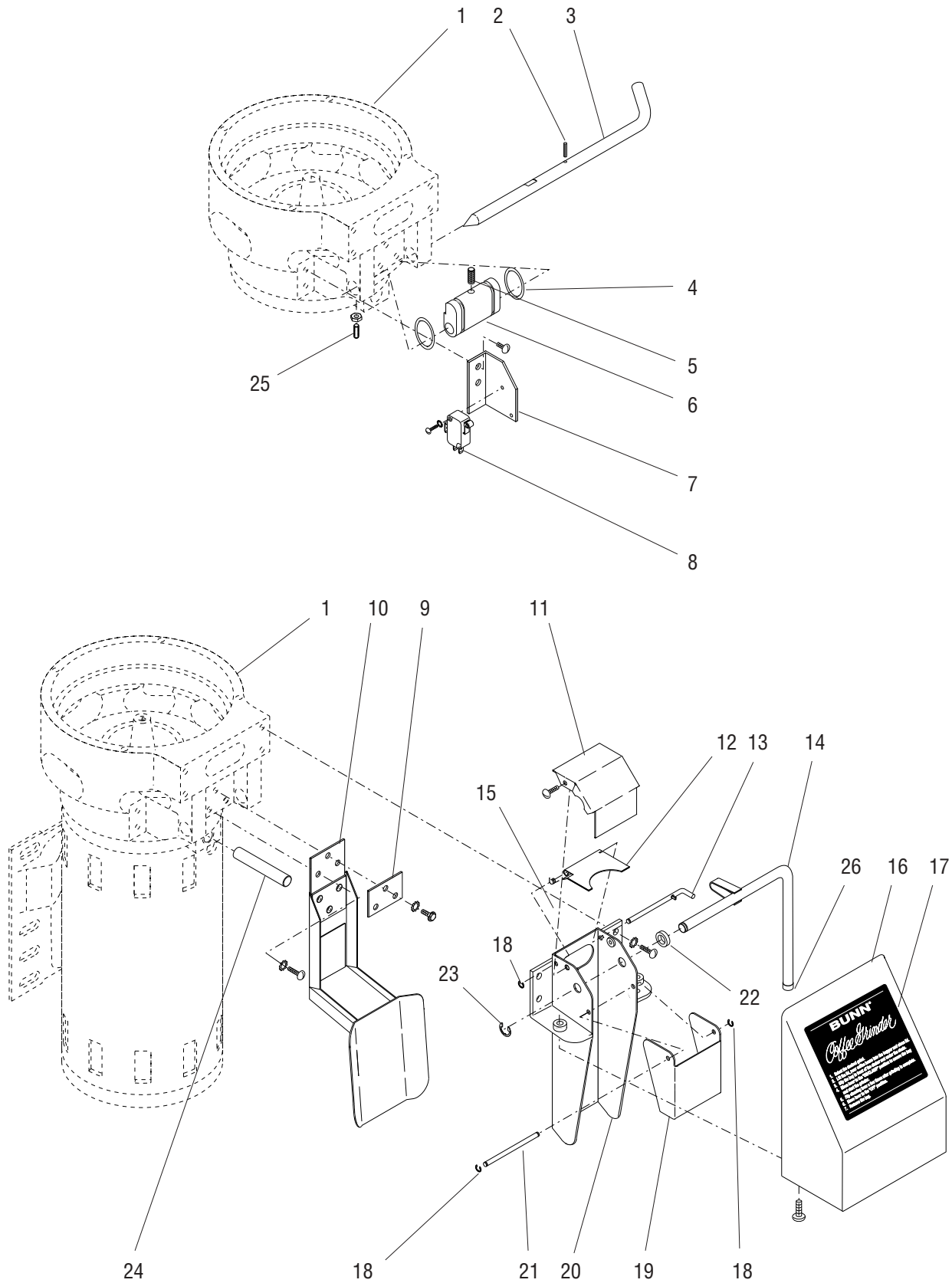
<b>TITLE</b>	<b>PAGE NO.</b>
Chute and Bag Shaker Components .....	6
Cover, Panels and Base .....	4
Electrical Components .....	10
Hopper, Motor and Grind Housing.....	8
Numerical Index.....	12



## COVER, PANELS AND BASE

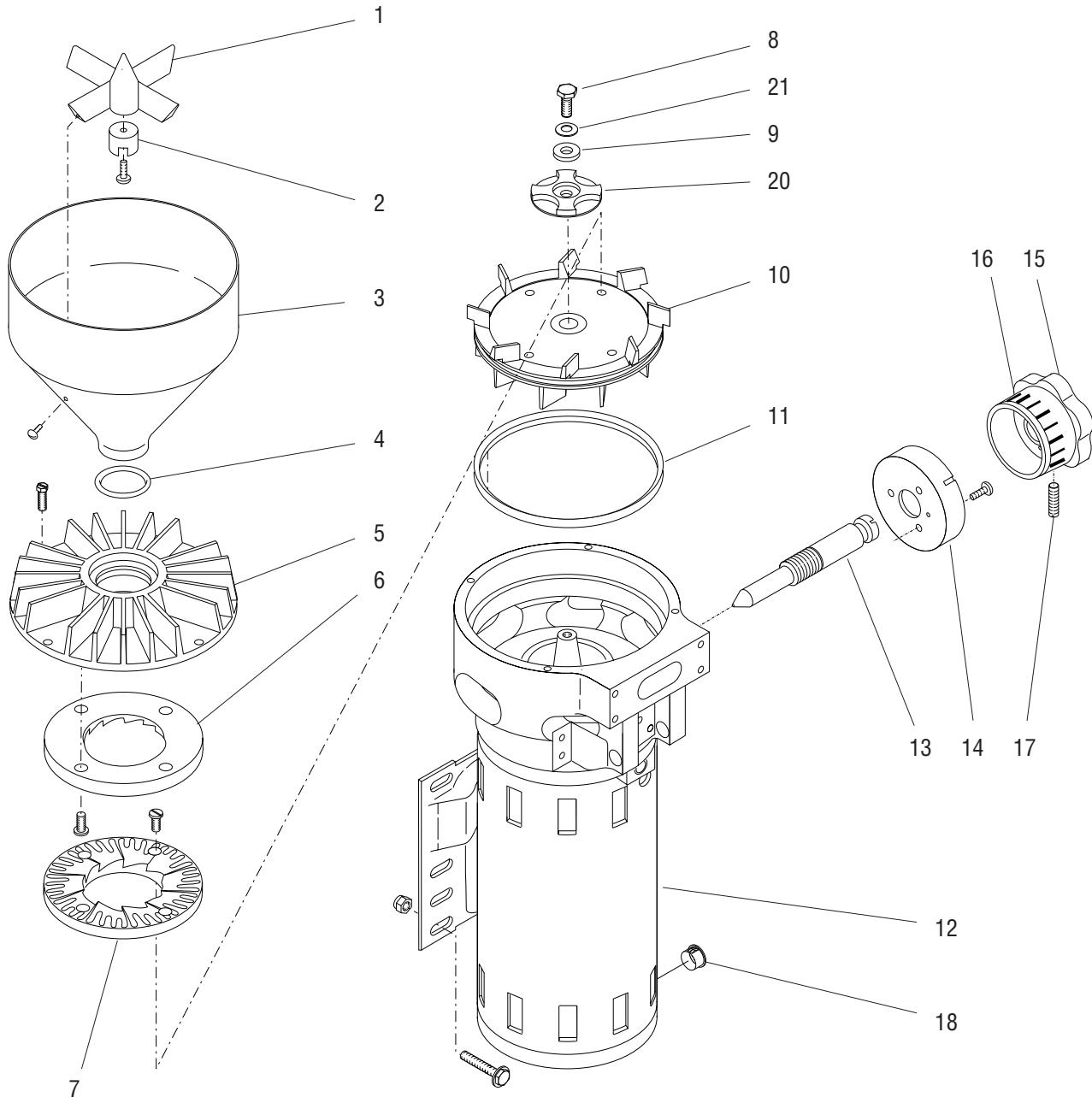
ITEM	PART NO.	QTY.	DESCRIPTION
1	25854.1000	1	Lid, Hopper 120V Grinders (Includes items 3 & 4)
	25854.1001	1	Lid, Hopper 120/240V Grinders (Includes items 3 & 4)
2	25859.0000	4	Screw, Shoulder, #10-32 x .25"
3	26475.0000	1	Schematic, Electrical 120V Grinders
	26474.0000	1	Schematic, Electrical 120/240V Grinders
4	11076.0000	1	Decal, Caution
5	25852.0000	1	Collar, Hopper Cast
	23505.0002	4	Screw, Pan Head .25"-20 x 1.5"
6	25846.1000	1	Panel, Right Side (Includes items 7 & 8)
	00987.0001	4	Nut, Elastic Lock .25"-20
7	26161.0000	1	Decal, Bag Clamp
8	26453.0000	1	Decal, Run - Stop
9	25823.0000	1	Panel, Front
10	26044.0000	1	Tray, Overflow
11	02547.0000	2	Foot, Rubber
12	25853.0000	1	Base, Cast
	23505.0001	4	Screw, Pan Head .25"-20 x 1.0"
13	25137.0000	4	Foot, .25"-20 x .75" O.D. x .25" HT
14	25828.0000	1	Panel, Left Side
	00987.0001	4	Nut, Elastic Lock .25"-20
15	25821.1000	1	Panel, Rear (Includes items 16 & 17)
16	26423.0000	1	Decal, Operation and Service
17	00986.0000	1	Decal, Warning Electrical
18	25904.0000	1	Lid, Hopper
19	25895.0000	1	Hopper
20	26747.0000	1	Ring, Hopper Mounting
21	05876.0000	1	Decal, Caution
22	26808.0000	-	Kit, Hopper Extension (Includes items 2, 3, & 18 thru 21)

} Optional



## CHUTE AND BAG SHAKER COMPONENTS

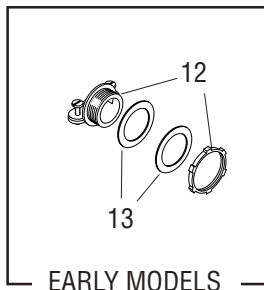
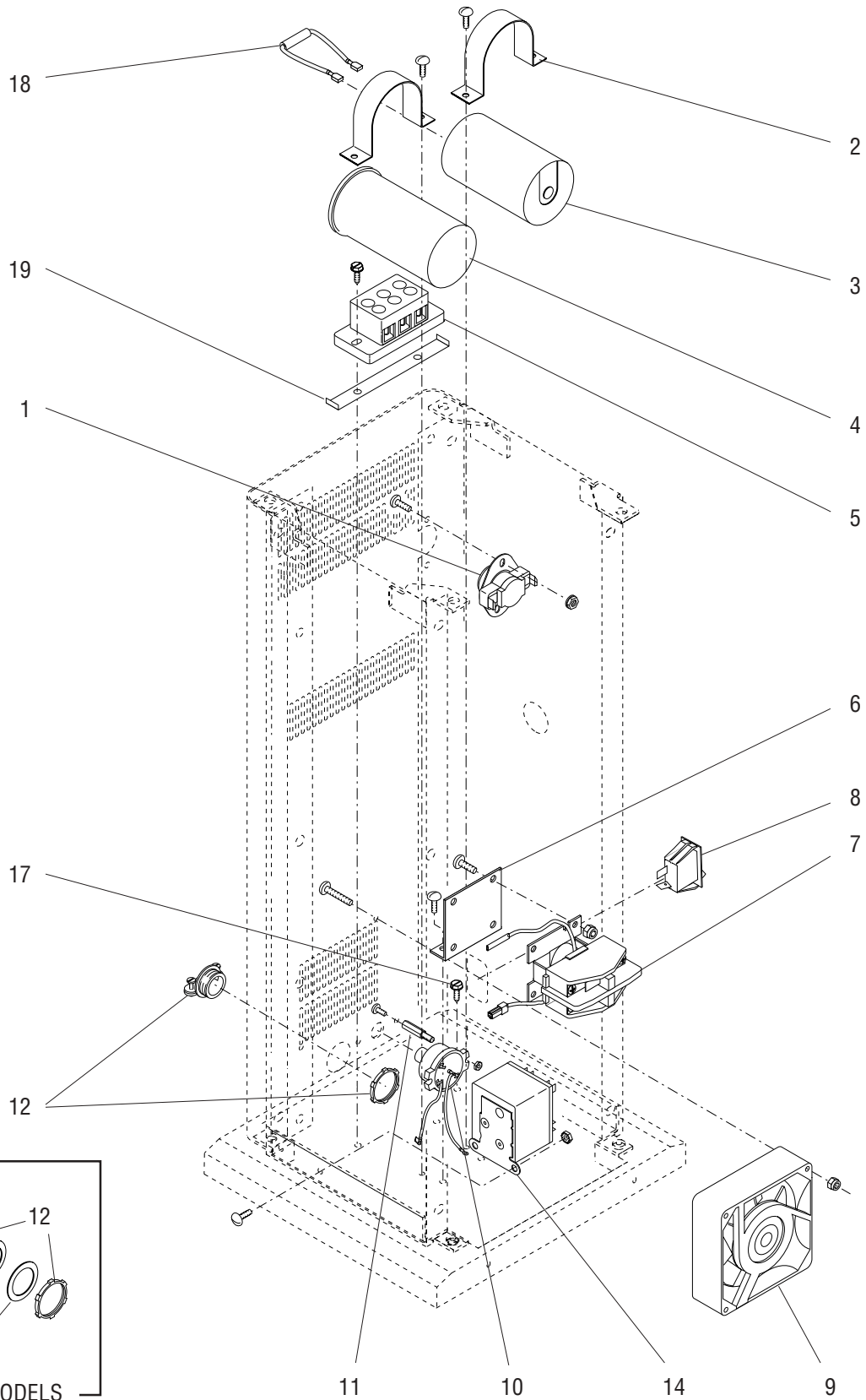
ITEM	PART NO.	QTY.	DESCRIPTION
1	-----	1	Motor Assembly (See Motor and Grind Housing)
2	26247.0001	1	Pin, Spring .094" Dia x .50" Lg
3	26045.0000	1	Control Rod, Bag Holder
4	24733.0008	2	O-Ring, .799" I.D.
5	26210.0000	1	Set Screw .25"-20 x .50"
6	26046.0000	1	Cam, Bag Holder
7	26047.0000	1	Bracket, Switch Mounting
	26211.0000	2	Screw, Truss Head #10-24 x .25"
8	25977.0000	1	Switch, Roller
	01303.0000	2	Screw, Pan Head #4-40 x .50"
	01509.0000	2	Lockwasher, External Tooth #4
9	25856.0000	1	Plate, Bag Shaker
10	26141.0000	1	Bag Shaker Assembly
	02307.0000	1	Screw, Hex Washer Head #10-24 x .375"
	01394.0000	2	Screw, Truss Head #10-24 x .50"
	01512.0000	3	Lockwasher, External Tooth #10
11	25815.0000	1	Cover, Chute
	02361.0000	2	Screw, Pan Head Pozidrive #4-40 x .25"
12	25984.0000	1	Plate, Dechaffer
13	25847.0000	1	Pin, Dechaffer Pivot
14	25820.0000	1	Control Rod
15	20204.1100	1	Spring, Dechaffer
16	25855.1000	1	Cover, Discharge Chute (Includes item 17)
	23505.0003	2	Screw, Pan Head .25"-20 x .75"
17	25153.0001	1	Decal, Bunn Coffee Grinder Instructions
18	26209.0000	3	E-Ring, .140" Dia Shaft
19	25814.0000	1	Deflector, Chute
20	25810.0000	1	Chute
	01394.0000	4	Screw, Truss head #10-24 x .50"
	01512.0000	4	Lockwasher, External Tooth, #10
21	25816.0000	1	Pin, Deflector Pivot
22	01533.0001	1	Washer, Nylon .317" I.D. x .50" O.D.
23	26209.0001	1	E-Ring, .312" Dia Shaft
24	26160.0000	1	Rod, Actuator
25	26630.0000	1	Spring Plunger
	00902.0000	1	Nut, Hex .375"-16
26	12919.0006	1	Cap, BLK .281" I.D. x .50"





## HOPPER, MOTOR AND GRIND HOUSING

ITEM	PART NO.	QTY.	DESCRIPTION
-	25950.0000	1	Motor & Grinder Assembly, 120V (Includes items 5 thru 12, 20 & 21)
-	25950.0001	1	Motor & Grinder Assembly, 208-240V (Includes items 5 thru 12)
1	26418.0000	1	Support, Magnet
	01382.0003	2	Screw, Truss Head W/Nylon Patch #6-32 x .375"
2	26419.0000	1	Magnet, Hopper
	20672.0000	1	Screw, Fillister Head #10-32 x .625"
3	25860.0000	1	Hopper
4	24733.0009	1	O-Ring, 1.725" I.D.
5	26149.0000	1	Cover, Grind Housing, 120/240V Grinders
	26345.0000	1	Cover, Grind Housing, 120V Grinders
	26681.0000	4	Screw, Hex Washer Head - Serrated .250"-20 x .75"
6	-----	1	Burr, Top (Order Item 19)
	02314.0000	4	Screw, Pan Head .250"-20 x .50"
7	-----	1	Burr, Bottom (Order Item 19)
	02314.0000	4	Screw, Pan Head .250"-20 x .50"
8	26208.0001	1	Screw, Hex Head .312"-18 x 1.0"
9	26049.0000	1	Washer, Flat
10	26148.0000	1	Support, Burr
11	26155.0000	1	Gasket, Felt
12	26153.0001	1	Motor and Burr Housing Assembly, 120V
	26153.0000	1	Motor and Burr Housing Assembly, 208-240V
	02312.0001	4	Screw, Hex Washer Head .312"-18 x .75"
	00987.0000	4	Nut, Elastic Lock .312"-18
13	26142.0000	1	Shaft, Adjustment Knob
14	25819.0000	1	Cup, Adjustment Knob
	01327.0000	3	Screw, Pan Head #10-32 x .375"
15	26143.0000	1	Knob, Burr Adjustment
16	-----	1	Decal, Burr Adjustment (Not available)
17	11068.0000	2	Set Screw, .312"-18 x 1.0"
18	01663.0000	1	Bushing, Snap .875" Dia
19	26548.1000	1	Kit, Burr Set (Includes items 6, 7 and mounting screws)
20	27560.0000	1	Agitator (120V Motors)
21	27901.0000	1	Washer, Bellville



## ELECTRICAL COMPONENTS

ITEM	PART NO.	QTY.	DESCRIPTION
1	25976.0000	1	Thermostat, Fan Control
	01315.0000	2	Screw, Truss Head #8-32 x .375"
	00970.0000	2	Nut, Keps #8-32
2	26144.0000	2	Clamp, Capacitor Mounting
	02329.0000	4	Screw, Round Head #8-32 x .312"
3	26146.0000	1	Capacitor, Start 120V & 120/240V Grinders
4	26147.0001	1	Capacitor, Run 120V Grinders
	26147.0000	1	Capacitor, Run 120/240V Grinders
5	07038.0000	1	Terminal Block, 3 Pole - RED/WHT/BLK (Shown)
	01106.0000	1	Terminal Block, 2 Pole - WHT/BLK
	02311.0000	2	Screw, Hex Washer Head #10-32 x .50"
6	26271.0000	1	Bracket, Contactor Mounting
	01330.0000	2	Screw, Hex Slotted Washer Head #10-32 x .38"
7	06335.0005	1	Contactor Assembly, 120V & 120V/240V Grinders
	01327.0000	4	Screw, Pan Head #10-32 x .375"
	00991.0003	4	Nut, Elastic Lock #10-32
8	06536.0000	1	Switch, Run - Stop
9	25982.0000	1	Fan
	01322.0001	2	Screw, Round Head #8-32 x 1.25"
	00991.0000	2	Nut, Elastic Lock #8-32
10	26387.0001	1	Overload Protector Assembly (120V Early Grinders)
	26387.0002	1	Overload Protector Assembly (120V Late Grinders)
	26387.0000	1	Overload Protector Assembly (120/240V Grinders)
	00908.0000	2	Nut, Hex #8-32
11	23825.0000	2	Spacer, Hex
	02329.0000	2	Screw, Round Head #8-32 X .312"
12	01685.0000	1	Connector, Cable .50" NPT (All 120V & 120/240V Late Grinders)
	01590.0000	1	Connector, Cable .75" NPT (120/240V Early Grinders Only)
13	01531.0000	2	Washer, Reducing .875" I.D. (120V Early Grinders Only)
14	27205.0001	1	Relay, Potential Voltage (120V Late Grinders)
	02322.0002	2	Screw, Truss Head #8-32 x .38" Black
	00970.0000	2	Nut, Keps #8-32
15	26213.0001	1	Wiring Harness (120V Early Grinders W/O Potential Voltage Relay)
	26213.0002	1	Wiring Harness (120V Late Grinders With Potential Voltage Relay)
	26213.0000	1	Wiring Harness (120/240V Grinders)
16	23799.0001	1	Cord Assembly, Power (120V Grinders)
	01699.0000	1	Cord Assembly, Power (120/240V Grinders)
17	01330.0000	1	Screw, Hex Slotted Washer Head #10-32 x .38" (Cord Ground)
18	26420.0000	1	Resistor, Discharge
19	26561.0000	1	Bracket, Capacitor

} Not Illustrated

## NUMERICAL INDEX

PART NO.	PAGE NO.	PART NO.	PAGE NO.	PART NO.	PAGE NO.	PART NO.	PAGE NO.
00902.0000	7	25820.0000	7	26418.0000	9		
00908.0000	11	25821.1000	5	26419.0000	9		
00970.0000	11	25823.0000	5	26420.0000	11		
00986.0000	5	25828.0000	5	26423.0000	5		
00987.0000	9	25846.1000	5	26453.0000	5		
00987.0001	5	25847.0000	7	26474.0000	5		
00991.0000	11	25852.0000	5	26475.0000	5		
00991.0003	11	25853.0000	5	26548.1000	9		
01106.0000	11	25854.1000	5	26561.0000	11		
01303.0000	7	25854.1001	5	26630.0000	7		
01315.0000	11	25855.1000	7	26681.0000	9		
01322.0001	11	25856.0000	7	26747.0000	5		
01327.0000	9,11	25859.0000	5	26808.0000	5		
01330.0000	11	25860.0000	9	27205.0001	11		
01382.0003	9	25895.0000	5	27560.0000	9		
01394.0000	7	25904.0000	5	27901.0000	9		
01509.0000	7	25950.0000	9				
01512.0000	7	25950.0001	9				
01531.0000	11	25976.0000	11				
01533.0001	7	25977.0000	7				
01590.0000	11	25982.0000	11				
01663.0000	9	25984.0000	7				
01685.0000	11	26044.0000	5				
01699.0000	11	26045.0000	7				
02307.0000	7	26046.0000	7				
02311.0000	11	26047.0000	7				
02312.0001	9	26049.0000	9				
02314.0000	9	26141.0000	7				
02322.0002	11	26142.0000	9				
02329.0000	11	26143.1000	9				
02361.0000	7	26144.0000	11				
02547.0000	5	26146.0000	11				
05876.0000	5	26147.0000	11				
06335.0005	11	26147.0001	11				
06536.0000	11	26148.0000	9				
07038.0000	11	26149.0000	9				
11068.0000	9	26153.0000	9				
11076.0000	5	26153.0001	9				
12919.0006	7	26155.0000	9				
20204.1100	7	26160.0000	7				
20672.0000	9	26161.0000	5				
23505.0001	5	26208.0001	9				
23505.0002	5	26209.0000	7				
23505.0003	7	26209.0001	7				
23799.0001	11	26210.0000	7				
23825.0000	11	26211.0000	7				
24733.0008	7	26213.0000	11				
24733.0009	9	26213.0001	11				
25137.0000	5	26213.0002	11				
25153.0001	7	26247.0001	7				
25810.0000	7	26271.0000	11				
25814.0000	7	26345.0000	9				
25815.0000	7	26387.0000	11				
25816.0000	7	26387.0001	11				
25819.0000	9	26387.0002	11				