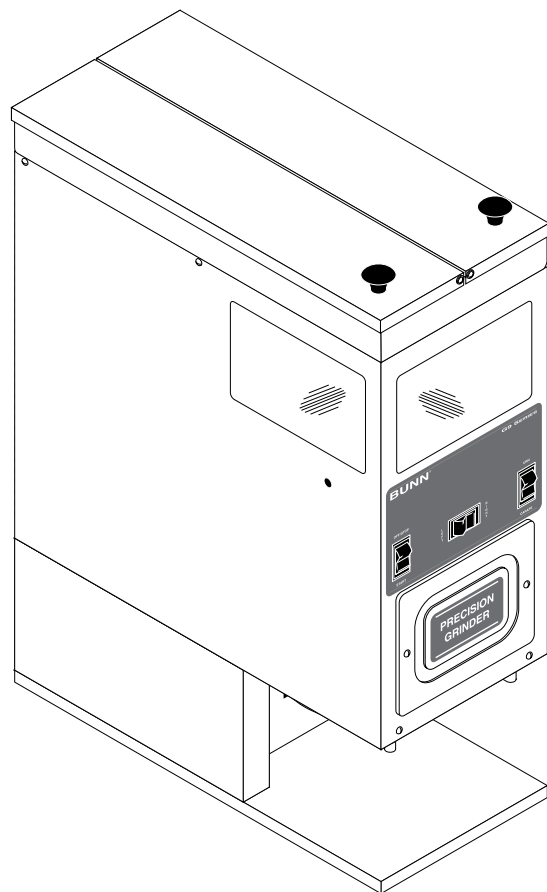
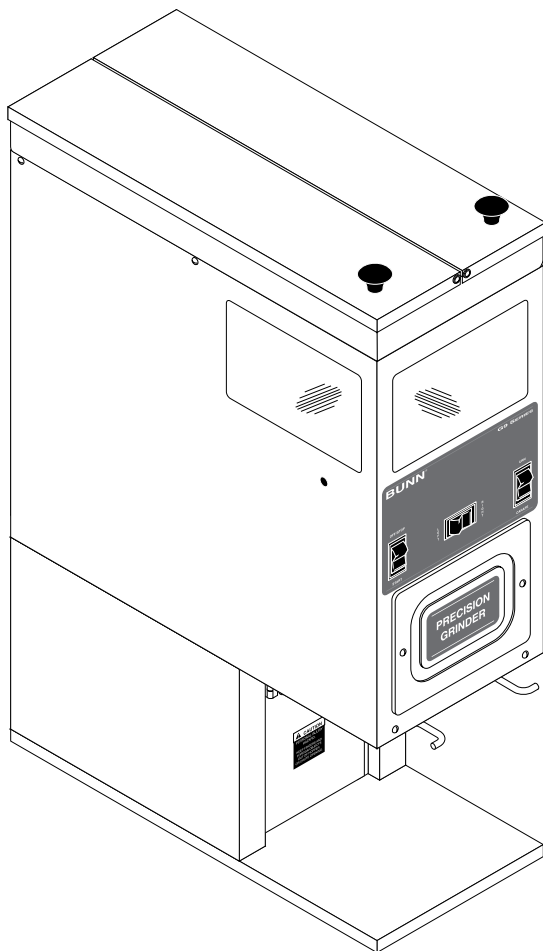


BUNN®

G9-2 HD
G9-2T HD
G9-2 HD-S



ILLUSTRATED PARTS CATALOG

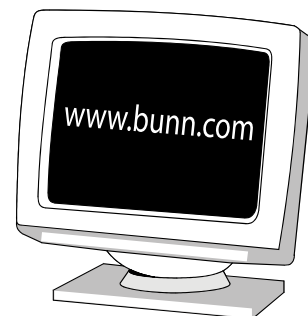
Designs, materials, weights, specifications, and dimensions for equipment or replacement parts are subject to change without notice.

BUNN-O-MATIC CORPORATION

POST OFFICE BOX 3227

SPRINGFIELD, ILLINOIS 62708-3227

PHONE: (217) 529-6601 FAX: (217) 529-6644



BUNN-O-MATIC COMMERCIAL PRODUCT WARRANTY

Bunn-O-Matic Corp. ("BUNN") warrants equipment manufactured by it as follows:

- 1) Airpots, thermal carafes, decanters, GPR servers, iced tea/coffee dispensers, MCP/MCA pod brewers thermal servers and Thermofresh servers (mechanical and digital)- 1 year parts and 1 year labor.
- 2) All other equipment - 2 years parts and 1 year labor plus added warranties as specified below:
 - a) Electronic circuit and/or control boards - parts and labor for 3 years.
 - b) Compressors on refrigeration equipment - 5 years parts and 1 year labor.
 - c) Grinding burrs on coffee grinding equipment to grind coffee to meet original factory screen sieve analysis - parts and labor for 4 years or 40,000 pounds of coffee, whichever comes first.

These warranty periods run from the date of installation BUNN warrants that the equipment manufactured by it will be commercially free of defects in material and workmanship existing at the time of manufacture and appearing within the applicable warranty period. This warranty does not apply to any equipment, component or part that was not manufactured by BUNN or that, in BUNN's judgment, has been affected by misuse, neglect, alteration, improper installation or operation, improper maintenance or repair, non periodic cleaning and descaling, equipment failures related to poor water quality, damage or casualty. In addition, the warranty does not apply to replacement of items subject to normal use including but not limited to user replaceable parts such as seals and gaskets. This warranty is conditioned on the Buyer 1) giving BUNN prompt notice of any claim to be made under this warranty by telephone at (217) 529-6601 or by writing to Post Office Box 3227, Springfield, Illinois 62708-3227; 2) if requested by BUNN, shipping the defective equipment prepaid to an authorized BUNN service location; and 3) receiving prior authorization from BUNN that the defective equipment is under warranty.

THE FOREGOING WARRANTY IS EXCLUSIVE AND IS IN LIEU OF ANY OTHER WARRANTY, WRITTEN OR ORAL, EXPRESS OR IMPLIED, INCLUDING, BUT NOT LIMITED TO, ANY IMPLIED WARRANTY OF EITHER MERCHANTABILITY OR FITNESS FOR A PARTICULAR PURPOSE. The agents, dealers or employees of BUNN are not authorized to make modifications to this warranty or to make additional warranties that are binding on BUNN. Accordingly, statements by such individuals, whether oral or written, do not constitute warranties and should not be relied upon.

If BUNN determines in its sole discretion that the equipment does not conform to the warranty, BUNN, at its exclusive option while the equipment is under warranty, shall either 1) provide at no charge replacement parts and/or labor (during the applicable parts and labor warranty periods specified above) to repair the defective components, provided that this repair is done by a BUNN Authorized Service Representative; or 2) shall replace the equipment or refund the purchase price for the equipment.

THE BUYER'S REMEDY AGAINST BUNN FOR THE BREACH OF ANY OBLIGATION ARISING OUT OF THE SALE OF THIS EQUIPMENT, WHETHER DERIVED FROM WARRANTY OR OTHERWISE, SHALL BE LIMITED, AT BUNN'S SOLE OPTION AS SPECIFIED HEREIN, TO REPAIR, REPLACEMENT OR REFUND.

In no event shall BUNN be liable for any other damage or loss, including, but not limited to, lost profits, lost sales, loss of use of equipment, claims of Buyer's customers, cost of capital, cost of down time, cost of substitute equipment, facilities or services, or any other special, incidental or consequential damages.

392, A Partner You Can Count On, AutoPOD, AXIOM, BrewLOGIC, BrewMETER, Brew Better Not Bitter, BrewWISE, BrewWIZARD, BUNN Espresso, BUNN Family Gourmet, BUNN Gourmet, BUNN Pour-O-Matic, BUNN, BUNN with the stylized red line, BUNNlink, Bunn-OMatic, Bunn-O-Matic, BUNNserve, BUNNSERVE with the stylized wrench design, Cool Froth, DBC, Dr. Brew stylized Dr. design, Dual, Easy Pour, EasyClear, EasyGard, FlavorGard, Gourmet Ice, Gourmet Juice, High Intensity, iMIX, Infusion Series, Intellisteam, My Café, Phase Brew, PowerLogic, Quality Beverage Equipment Worldwide, Respect Earth, Respect Earth with the stylized leaf and coffee cherry design, Safety-Fresh, savemycoffee.com, Scale-Pro, Silver Series, Single, Smart Funnel, Smart Hopper, SmartWAVE, Soft Heat, SplashGard, The Mark of Quality in Beverage Equipment Worldwide, ThermoFresh, Titan, trirecta, Velocity Brew, Air Brew, Air Infusion, Beverage Bar Creator, Beverage Profit Calculator, Brew better, not bitter., BUNNSource, Coffee At Its Best, Cyclonic Heating System, Daypart, Digital Brewer Control, Element, Nothing Brews Like a BUNN, Pouring Profits, Signature Series, Tea At Its Best, The Horizontal Red Line, Ultra are either trademarks or registered trademarks of Bunn-O-Matic Corporation. The commercial trirecta® brewer housing configuration is a trademark of Bunn-O-Matic Corporation.

TABLE OF CONTENTS

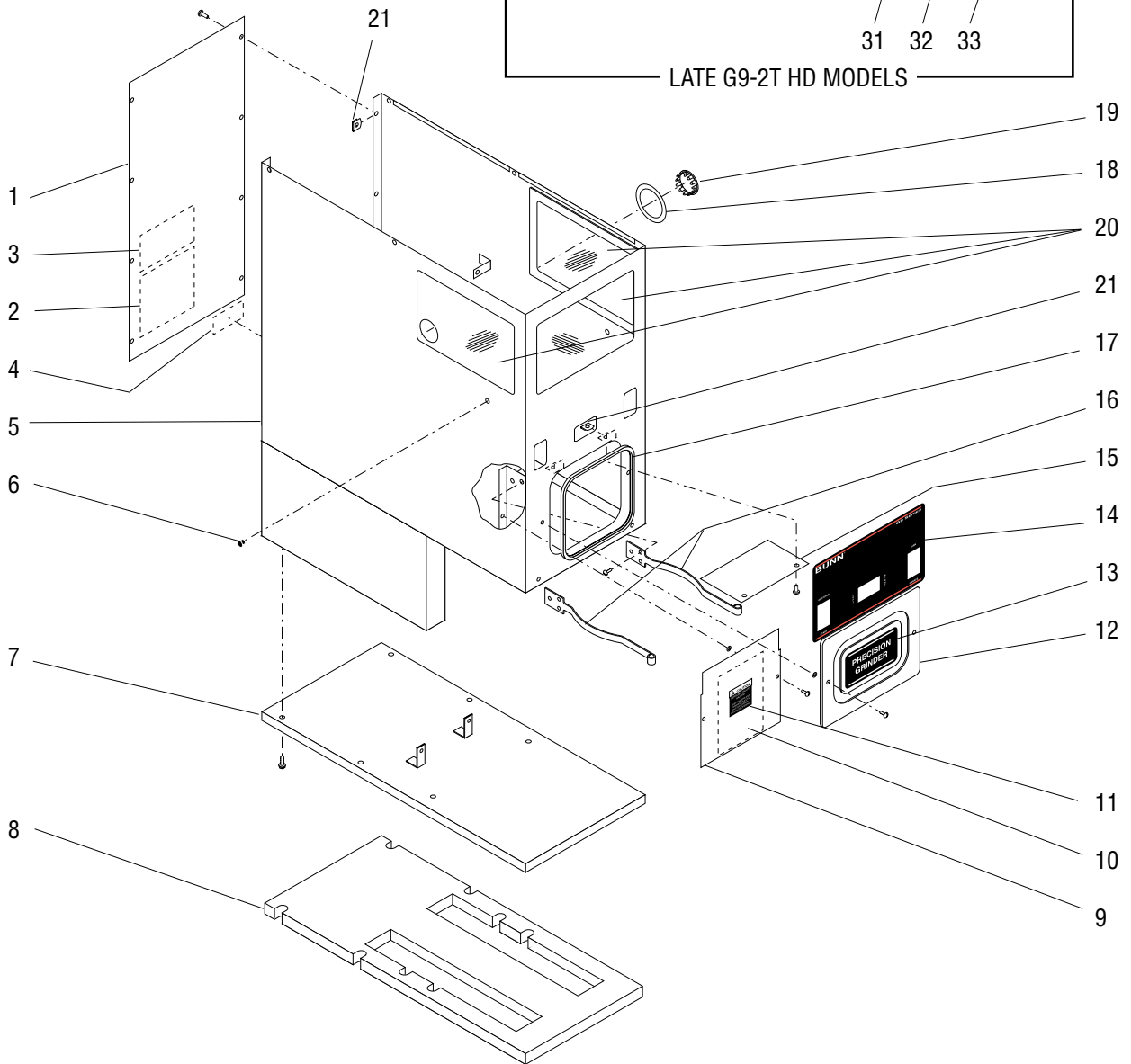
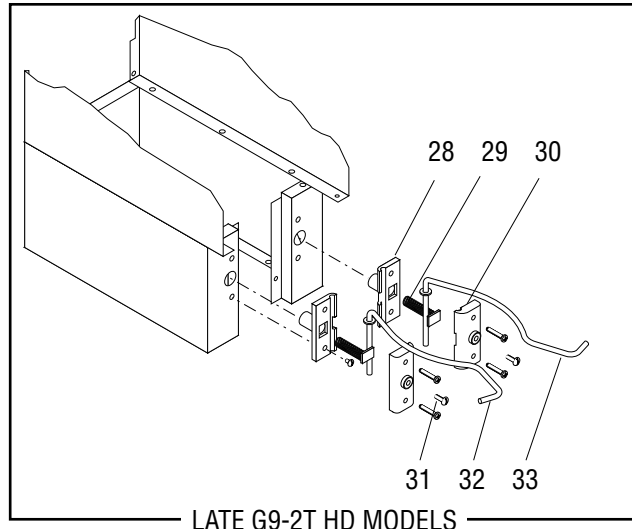
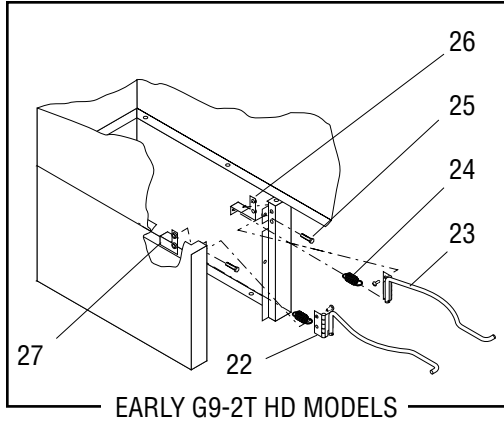
Electrical Controls16

Hopper, Lid and Slide Plate Assy.....8

Housing, Base and Panels.....4

Motor, Burr Housing and Mounting Plate.....12

Numerical Index.....20



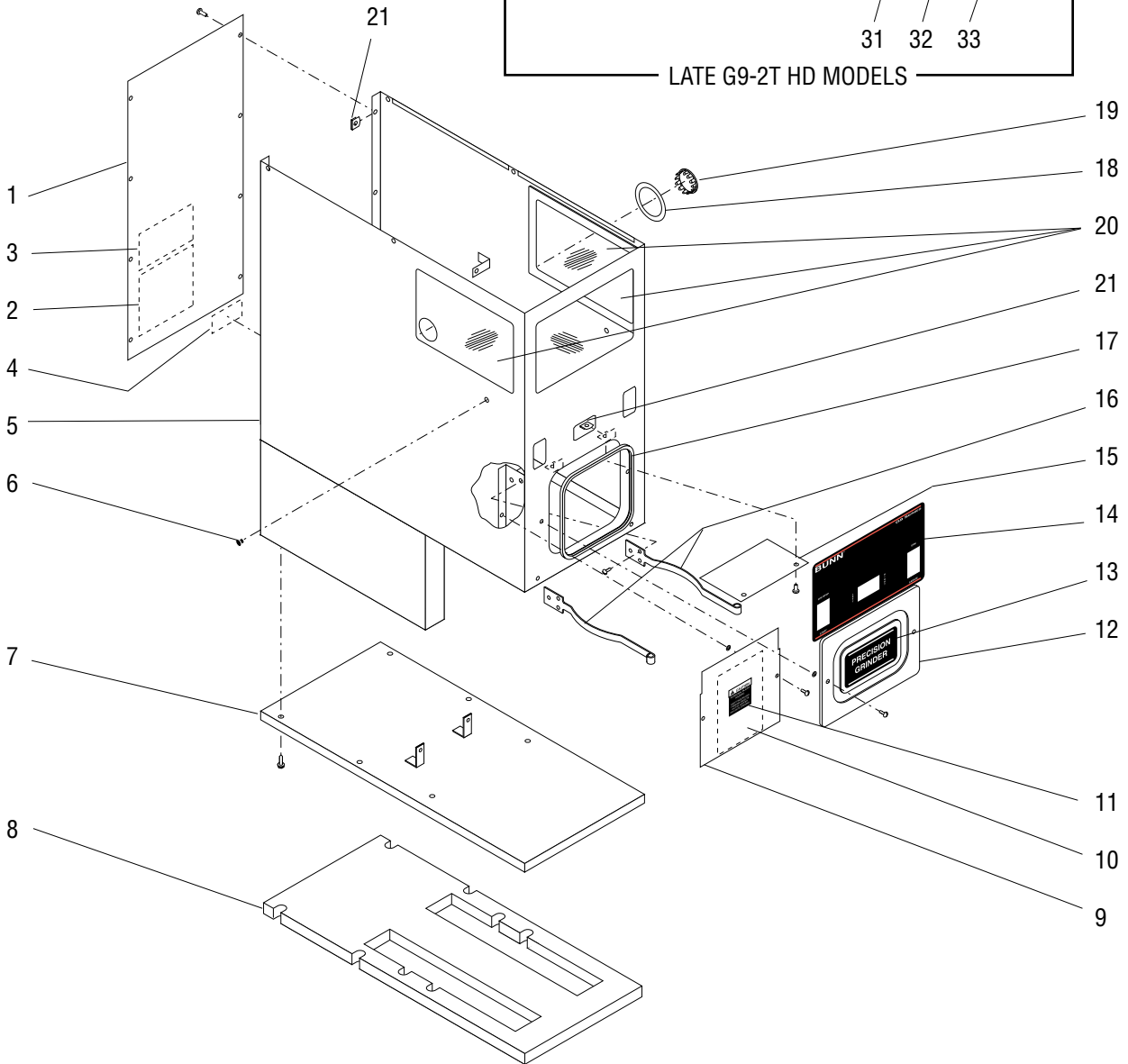
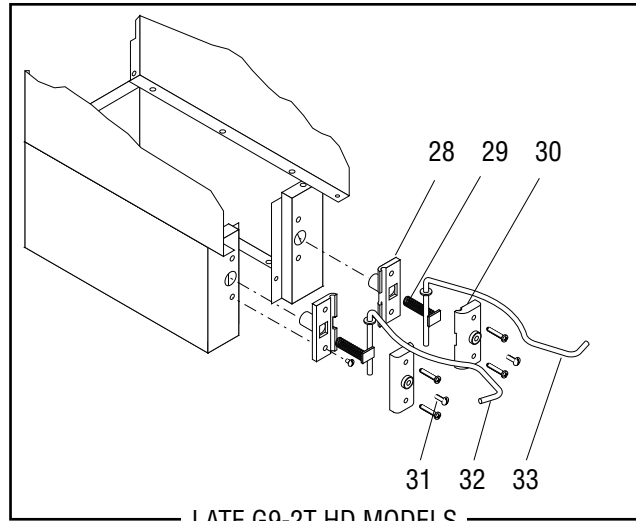
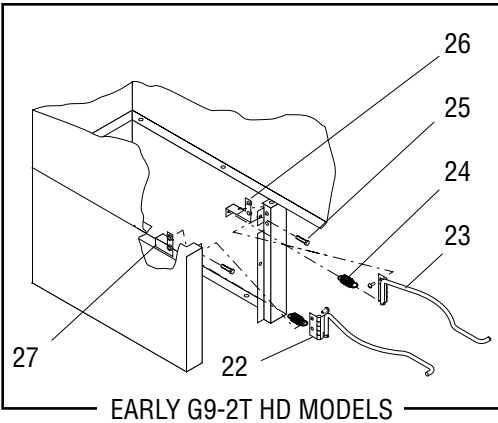
HOUSING, BASE AND PANELS

ITEM	PART NO.	QTY.	DESCRIPTION	
1	05844.1000	1	Rear Panel W/Decal (Includes items 2 & 3)	
	01315.0000	8	Screw, Truss Head #8-32 x .38"	
	01311.0003	8	Screw, Truss Head Blk #8-32 x .38"	
2	20545.0000	1	Decal, Warning Electrical	
3	37881.0000	1	Decal, No Serviceable Parts	
4	24237.0000	1	Decal, Notice - Interface Voltage	
5	25407.0000	1	Housing Assy W/Decals (G9-2 HD 120V)	Includes items 4, 18 & 20 Also order item 14
	25407.0004	1	Housing Assy W/Decals (BLK) (G9-2 HD 120V)	
	25407.0003	1	Housing Assy W/Decals (G9-2 HD 230V)	
	25408.0000	1	Housing Assy W/Decals SST (G9-2T HD 120V)	
	25408.0002	1	Housing Assy W/Decals (G9-2T HD 230V)	
25408.0003	1	Housing Assy W/Decals Blk (G9-2T HD 120V)		
6	05921.0000	1	Plug, Hole .25" Dia.	
7	05809.0000	1	Base (G9-2 HD & G9-2 HD-S)	
	05809.0002	1	Base (G9-2 HD) (BLK)	
	05752.0000	1	Base (G9-2T HD)	
	02311.0000	6	Screw, Hex Crimptite #10-32 x .50"	
8	05816.0000	1	Pad, Base	
9	20798.1003	1	Panel Assy W/Decals (120V) (G9-2 HD)	Includes screws and washers below and items 10 & 11
	20798.1014	1	Panel Assy W/Decals (BLK) (120V) (G9-2 HD)	
	20798.1004	1	Panel Assy W/Decals SST (120V) (G9-2T HD W/O or 2 batch sel.)	
	20798.1012	1	Panel Assy W/Decals Blk (120V) (G9-2T HD W/O or 2 batch sel.)	
	20798.1011	1	Panel Assy W/Decals (120V) (G9-2T HD 3 batch sel.)	
	20798.1005	1	Panel Assy W/Decals (230V, 240V) (G9-2 HD)	
	20798.1006	1	Panel Assy W/Decals (240V) (G9-2T HD)	
	20798.1009	1	Panel Assy W/Decals (120V) (G9-2 HD-S)	
	01380.0000	2	Screw, Truss Head #6-32 x .50"	
	01382.0002	2	Screw, Truss Head Blk #6-32 x .50"	
01518.0000	2	Washer, Screw Retaining #6		
10	10756.0000	1	Schematic/Time Chart 120V (W/O or 2 batch sel.)	
	10756.0002	1	Schematic/Time Chart 120V (3 batch sel.)	
	10756.0001	1	Schematic/Time Chart 120V (G9-2 HD-S)	
	10768.0000*	1	Schematic/Time Chart 240V	
11	05876.0000	1	Decal, Caution	
12	21620.1004	1	Cover Assy W/Decal SST (Includes screws and washers below and item 13)	
	21620.1011	1	Cover Assy W/Decal Blk (Includes screws and washers below and item 13)	
	01380.0000	2	Screw, Truss Head #6-32 x .50"	
	01382.0002	2	Screw, Truss Head Blk #6-32 x .50"	
	01518.0000	2	Washer, Screw Retaining #6	
13	24240.0000	1	Decal, Precision Grinder (Early Models)	
	33735.0002	1	Decal, Ground Fresh (Late Models)	
14	24239.0000	1	Decal, Control Panel (No batch sel.)	
	24239.0001	1	Decal, Control Panel (2 batch sel.) (Shown)	
	-----	1	Decal, Control Panel (3 batch sel.)(Not available)	

(Continued)

* Indicates the part number listed is for reference only. See DESCRIPTION for possible service replacement.

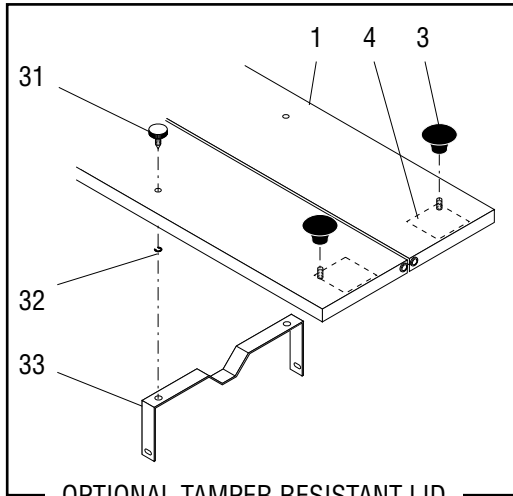
(Continued)



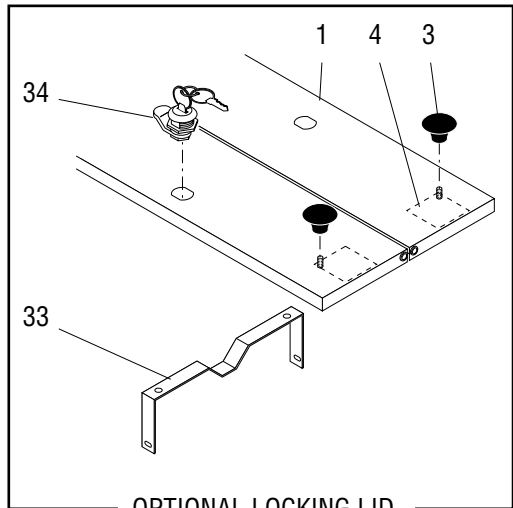
HOUSING, BASE AND PANELS

ITEM	PART NO.	QTY.	DESCRIPTION	
15	05827.0000	1	Plate, Switch Shield	
	02308.0000	2	Screw, Pan Head #8-32 x .38"	
	00912.0000	2	Clip, J-Type #8-32 (Late Models only)	
16	05839.0000	2	Funnel Rail	
	02308.0000	4	Screw, Pan Head #8-32 x .38"	
17	-----	1	Edging 19.15" (Order item 34)	
18	05884.0000	1	Decal, Motor Reset	
19	02999.0000	1	Plug, Hole 1.19" Dia.	
20	05814.0001	3	Window Assy (Includes adhesive)	
21	00917.0000	8	Clip, J-Type #8-32	
22	05771.0000	1	Funnel Rail, Left	Early Model G9-2T HD only
	02308.0000	2	Screw, Pan Head #8-32 x .38"	
23	05770.0000	1	Funnel Rail, Right	
	02308.0000	2	Screw, Pan Head #8-32 x .38"	
24	05781.0000	2	Spring	
25	05743.0000	2	Screw, Stop #8-32 x .75"	
26	05742.0000	1	Bracket, Right Spring	Late Model G9-2T HD only
27	05741.0000	1	Bracket, Left Spring	
28	32561.0000	2	Bracket, Inner Spring	
29	32570.0000	2	Spring	
30	39586.1000	2	Bracket, Outer Spring	
	01326.0008	4	Screw, Truss Head BLK #10-32 x 1.25"	
31	01317.0000	2	Screw, Adjustment, Truss Head BLK #8-32 x .50"	
32	32568.0001	1	Funnel Rail, Left	
33	32569.0001	1	Funnel Rail, Right	
34	38278.1002	-	Edging 36.0" (Cut to required length)	

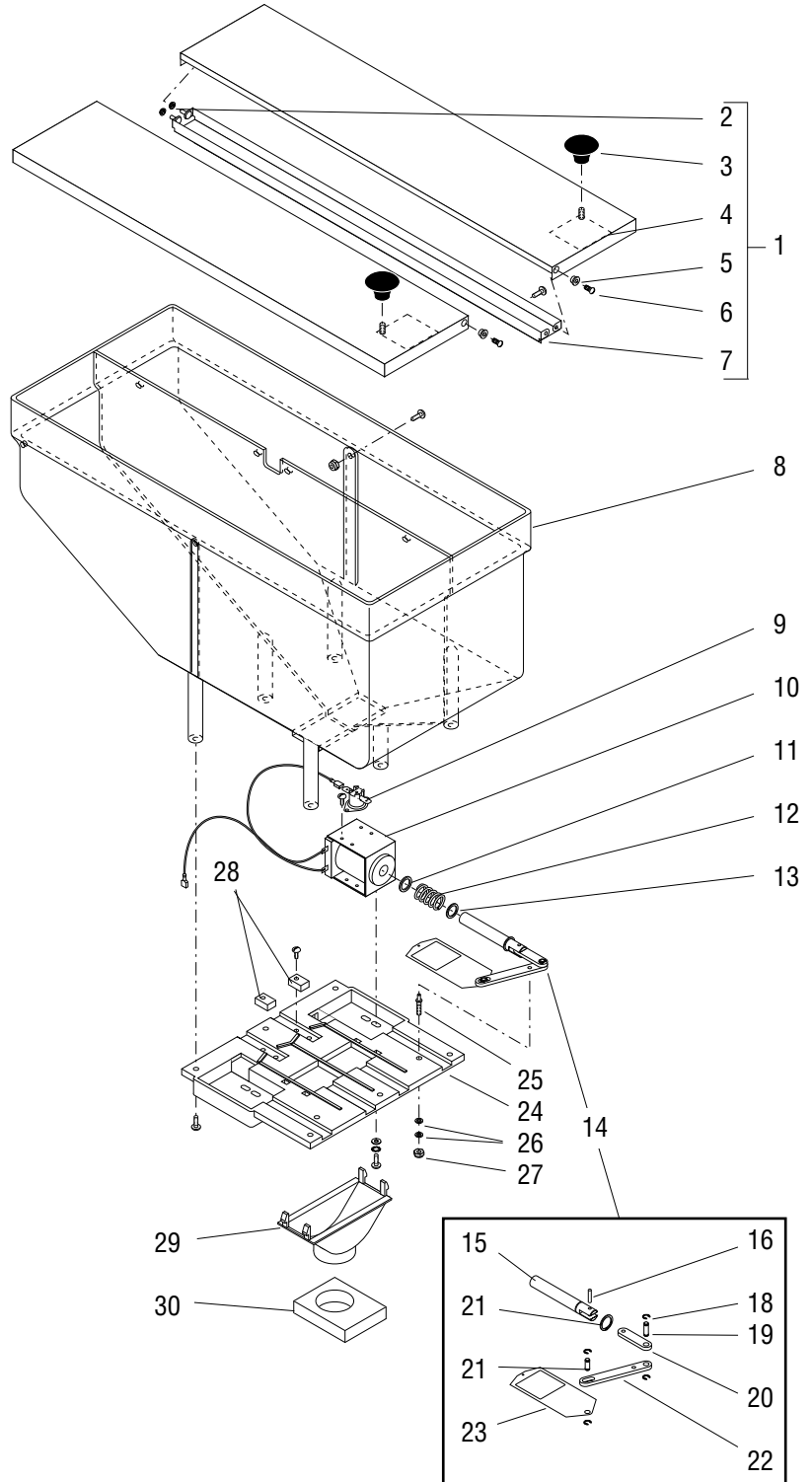
* Indicates the part number listed is for reference only. See DESCRIPTION for possible service replacement.



OPTIONAL TAMPER RESISTANT LID



OPTIONAL LOCKING LID



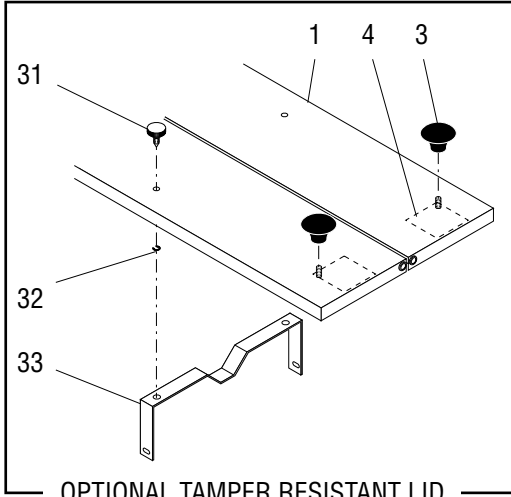
HOPPER, LID & SLIDE PLATE ASSEMBLY

ITEM	PART NO.	QTY.	DESCRIPTION	
-	24243.1000	1	Hopper Assy, 120V, SST Lid	} Includes items 1 thru 29
-	24243.1002	1	Hopper Assy, 120V, BLK Lid	
-	24243.1001	1	Hopper Assy, 240V	
1	24399.0000	1	Lid Assy, Hopper SST	} Includes items 2 thru 7
	24399.0004	1	Lid Assy, Hopper Blk	
	24399.0001	1	Lid Assy, Hopper Tamper Resistant	
	24399.0002	1	Lid Assy, Hopper Locking	
	02328.0000	4	Screw, Pan Head #6-32 x .38"	
2	26033.0001	2	Bearing, Snap-in (Early Models)	
	21438.0001	2	Washer, Shoulder .144" I.D. (Late Models)	
3	00725.0000	2	Knob	
4	05876.0000	2	Decal, Caution	
5	21438.0001	2	Washer, Shoulder .144" I.D.	
6	02328.0000	2	Screw, Pan Head #6-32 x .375"	
	01382.0007	2	Screw, Truss Head Blk #6-32 x .375"	
7	29358.0000	1	Channel, Hopper lid mounting	
8	05960.0000	1	Hopper Assy W/Inserts	} SST Grinders
	02367.0000	2	Screw, Truss Head #6-32 x .62"	
	01380.0000	2	Screw, Truss Head #6-32 x .50"	} Black Grinders
	01388.0002	2	Screw, Truss Head Blk #6-32 x .75"	
	02323.0000*	2	Screw, Truss Head Blk #6-32 x .50"	
	00991.0002	4	Nut, Hex #6 - 32	
9	23917.0000	2	Limit Thermostat	
	01311.0000	8	Screw, Truss Head #8-32 x .25"	
10	05939.0003	2	Solenoid Assy (120V)	
	05939.0004	2	Solenoid Assy (240V)	
	02308.0000	8	Screw, Pan Head #8-32 x .38"	
	01501.0000	8	Washer, Flat	
11	23923.0000	2	Washer, Fiber .063" Thick	
12	23918.0000	2	Spring	
13	23922.0000	2	Washer, Retaining .035" Thick	
14	05969.0000	2	Slide Plate/Linkage Assy (Includes items 15 thru 23)	
15	-----	2	Plunger (Not available seperately order item 14)	
16	02858.0000	2	Pin, Spring .125" x .50"	
17	23919.0000	2	Snap Ring	
18	01403.0000	8	E-Ring	
19	05914.0002	2	Pin, Linkage .19" x .39"	
20	05911.0001	2	Link, Slide Plate (Short)	
21	05914.0001	2	Pin, Linkage .19" x .30"	

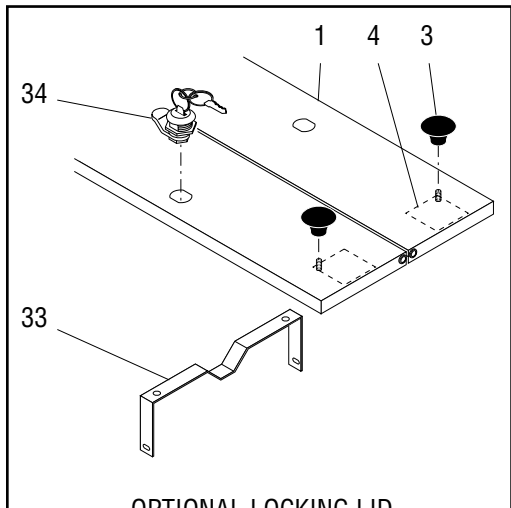
(Continued)

* Indicates the part number listed is for reference only. See DESCRIPTION for possible service replacement.

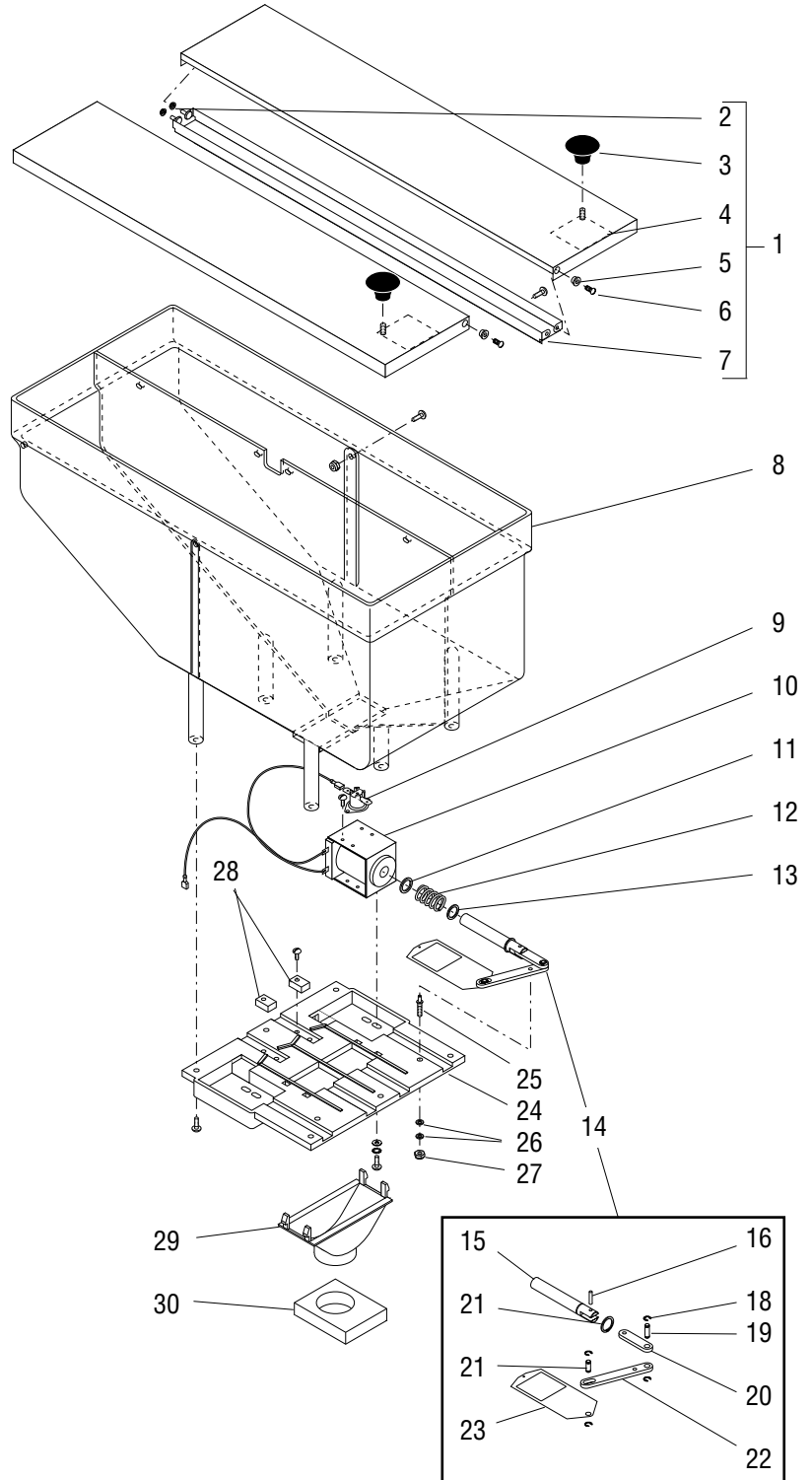
(Continued)



OPTIONAL TAMPER RESISTANT LID



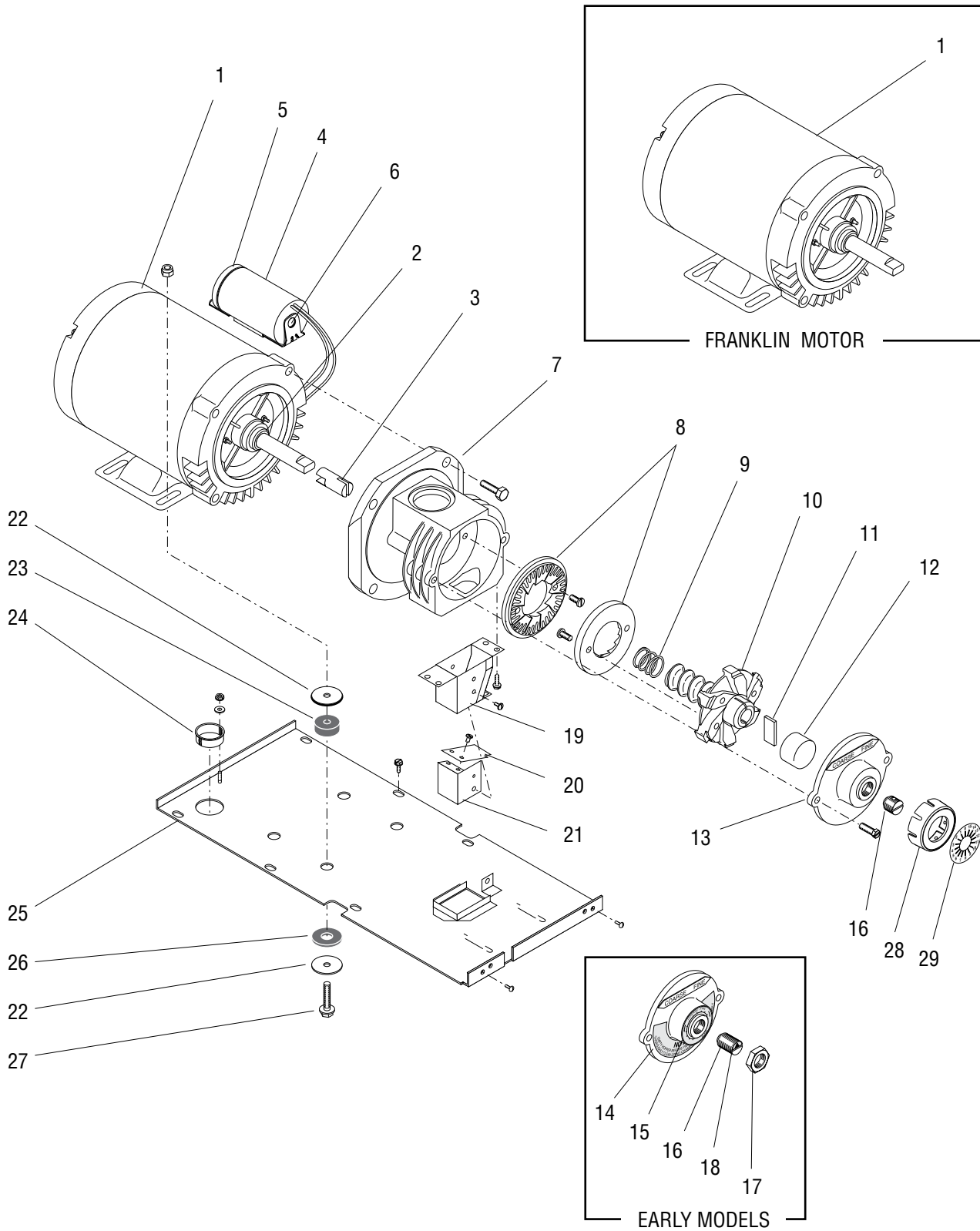
OPTIONAL LOCKING LID



HOPPER, LID & SLIDE PLATE ASSEMBLY

ITEM	PART NO.	QTY.	DESCRIPTION
22	05910.0000	2	Link, Slide Plate (Long)
23	05912.1000	2	Slide Plate (Includes item 32)
24	05959.0001	1	Mounting Panel Assy, Slide Plate (Includes items 25, 26 & 27)
	01317.0000	6	Screw, Truss Head #8-32 x .50"
25	23920.0000	2	Pin, Pivot
26	01547.0000	4	Spacer .062" Thick
27	00991.0000	2	Nut, Elastic Lock #8-32
28	23921.0000	2	Block, Stop
	02336.0000	2	Screw, Truss Head #4-32 x .38" } Early Models
29	05916.0000	1	Collector
30	21457.0001	1	Gasket, Burr Housing/Collector
31	-----	2	Thumb Screw (Not available)
32	01403.0000	2	E-Ring
33	05970.0001*	1	Bracket, Lid Locking
34	11628.0000	2	Lid Lock Assy (Includes Keys) (New Keys should be made locally)
35	38549.0000	-	Gauge (Used to set depth of slide gate during replacement)(Not Illustrated)

* Indicates the part number listed is for reference only. See DESCRIPTION for possible service replacement.



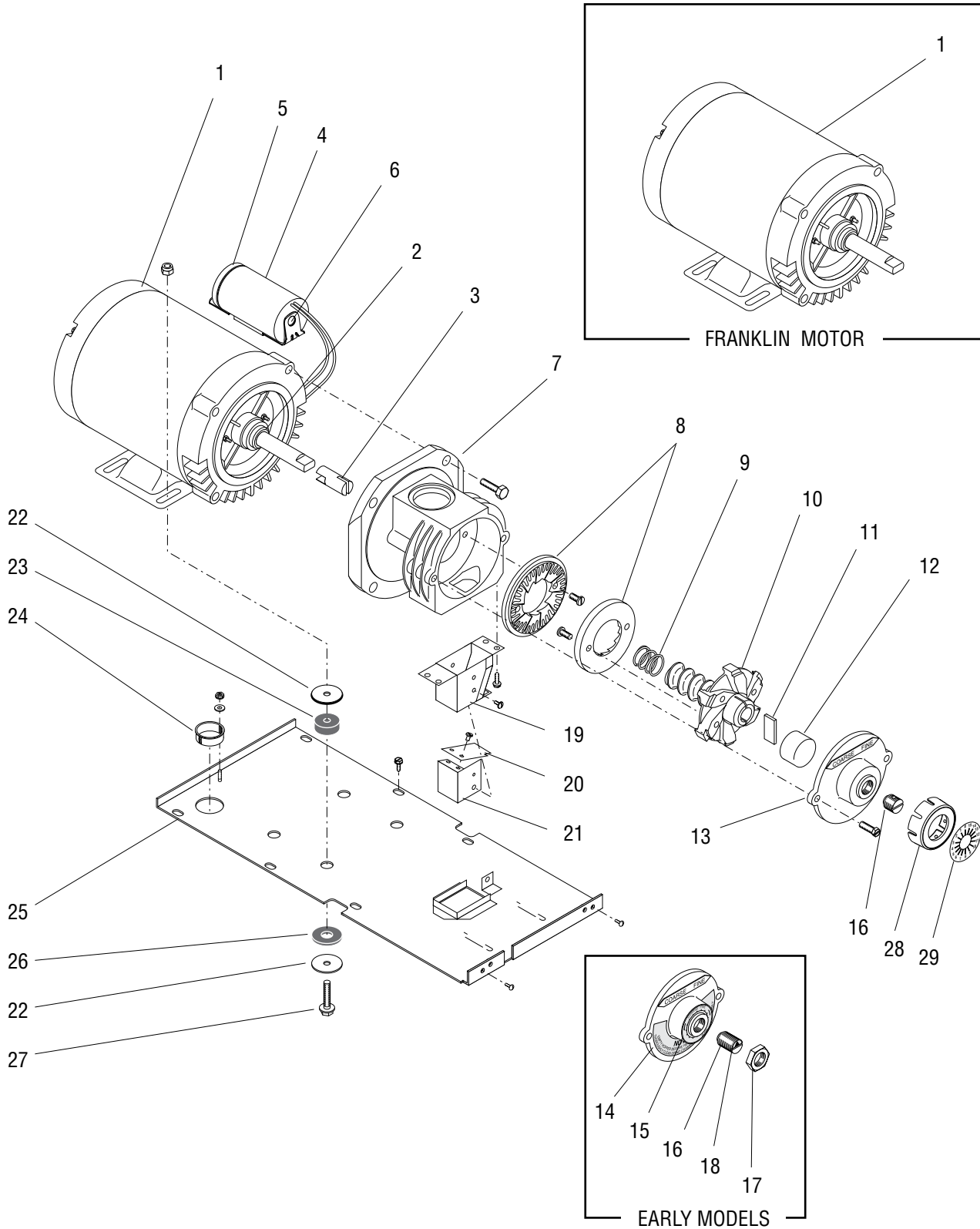
MOTOR, BURR HOUSING AND MOUNTING PLATE

ITEM	PART NO.	QTY.	DESCRIPTION
1	-----	1	Motor Assy,115V (Franklin) (Early models. Order late model Motor)
	11029.1005	1	Motor Assy,115V (Marathon) (Late models)
	11029.1006	1	Motor Assy, 230V
2	05870.0000	1	Bushing, Bronze
3	11191.0001	1	Shaft Extension
4	35249.0000	1	Capacitor
5	35906.0000	1	Cap
6	35233.0000	1	Bracket
	37204.0000	2	Screw, Flat Head 10-32 x .375"
7	11180.0000	1	Burr Housing
	02313.0000	4	Screw, Hex Head .38" - 16 x 1.0"
8	05861.1002	1	Burr Set (Includes 2 Burrs and Screws below)
	02314.0000	4	Screw, Pan Head .25" - 20 x .50"
9	11192.0000	1	Spring
10	11185.0001	1	Burr Auger Rotor/Spring Assy (Includes item 6)
11	05852.0001	1	Shear Plate
12	00622.0000	1	Cup, Burr Rotor (Standard)
	00622.0001	1	Cup, Burr Rotor (Heavy Duty)
13	05867.0000	1	Cap W/Decals, Burr Housing (Includes items 11 & 12)
	05867.0002	1	Cap & Adjustng Screw W/Decals, Burr Housing (Includes items 11 thru14) (Also order item 15)
	20631.0000	2	Screw, Slotted Hex Head .25" - 20 x .75"
14	05868.0000	1	Decal, Housing Cover
15	05880.0000	1	Decal, Grind Indicator
16	35184.0000	1	Adjusting Screw (Also order item 15)
17	00989.0000	1	Nut, Locking
18	05796.0000	1	Decal, Adjusting Screw
19	05951.0000	1	Chute
	02330.0000	4	Screw, Slotted Hex Head #10-24 x .50"
20	05995.0000	1	Dechaffer Plate
	02327.0002	2	Screw, Pan Head #4-40 x .312"
21	05954.0000	1	Dechaffer Assy (Includes item 20)
	41480.0000	1	Thumbscrew
	01518.0000	1	Washer
22	01539.0000	8	Washer, Flat
23	05881.0000	4	Bushing

(Continued)

* Indicates the part number listed is for reference only. See DESCRIPTION for possible service replacement.

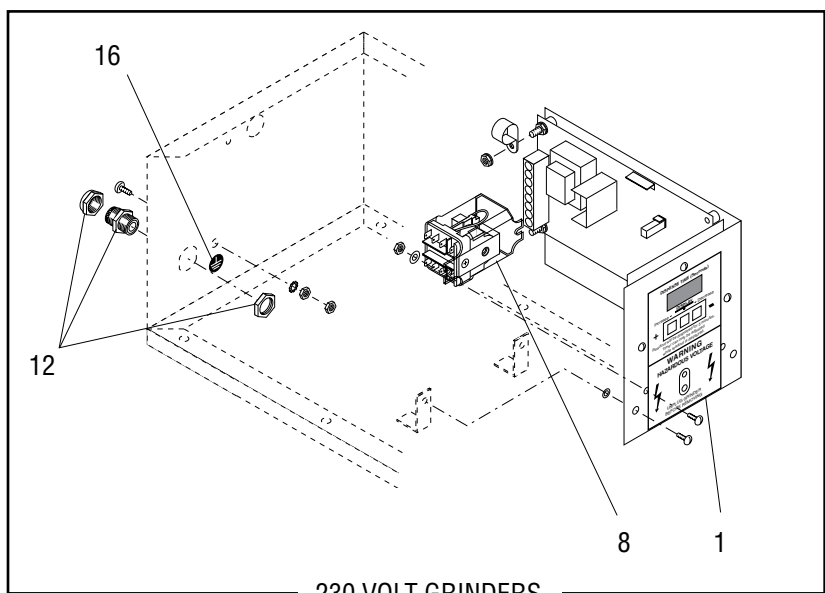
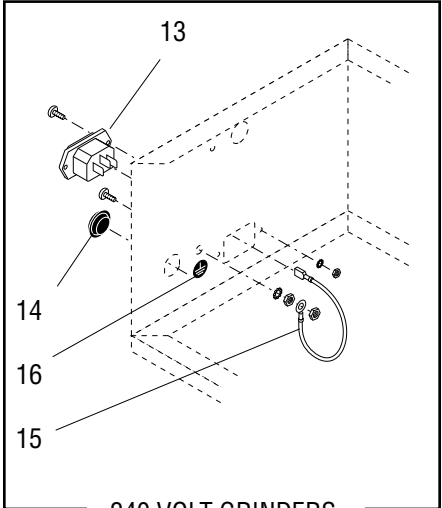
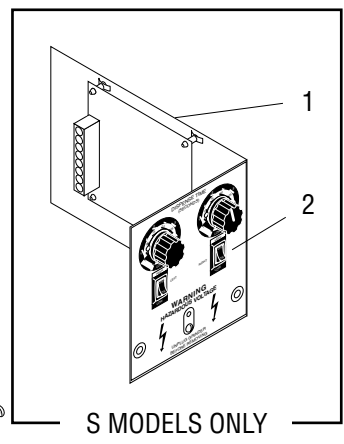
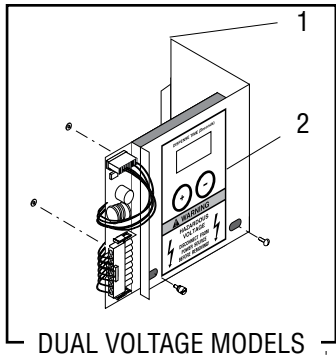
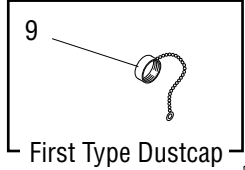
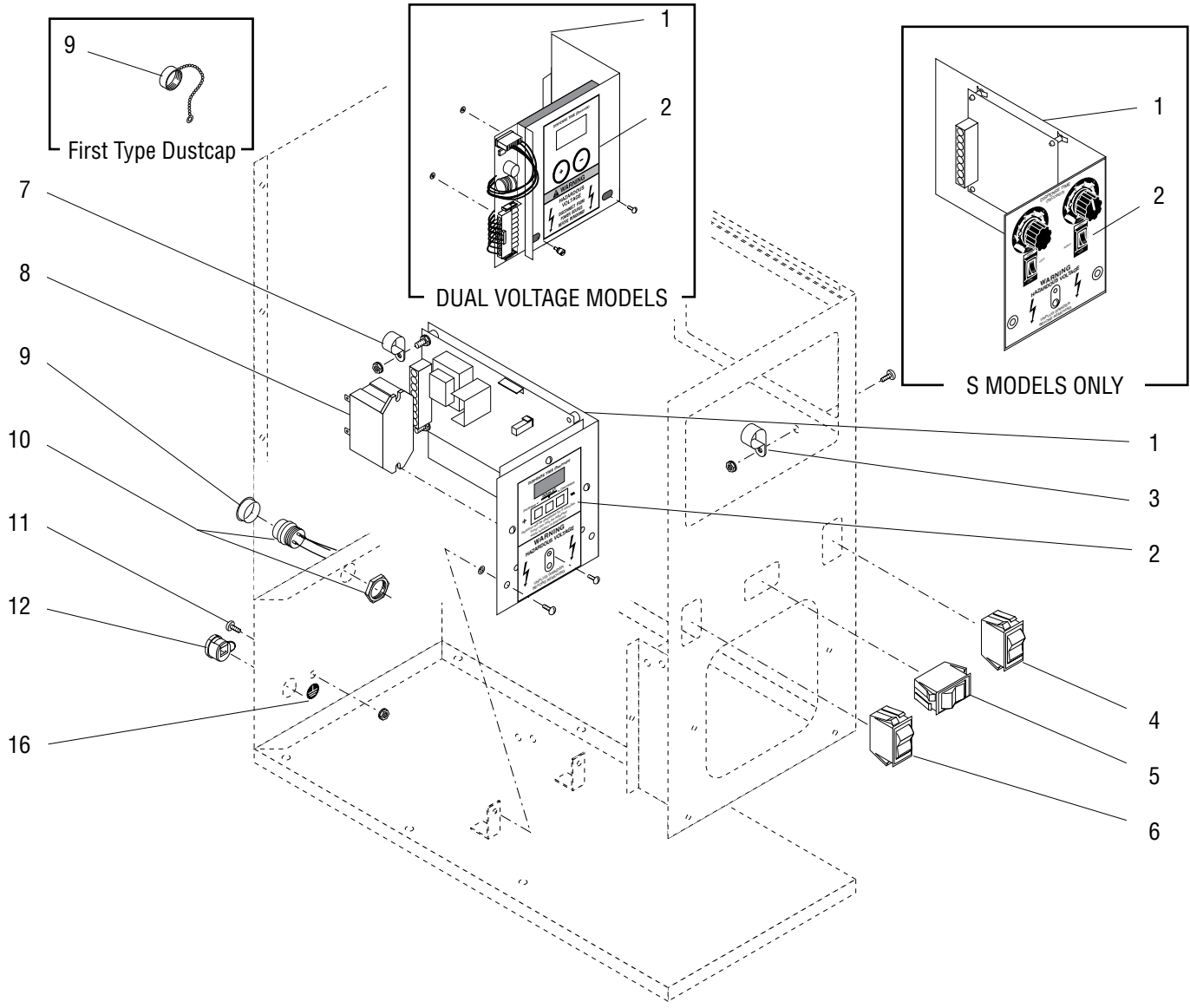
(Continued)



MOTOR, BURR HOUSING AND MOUNTING PLATE

ITEM	PART NO.	QTY.	DESCRIPTION
24	00718.0000	1	Bushing, 1.125" Dia. Hole
25	29883.0001	1	Plate, Motor Mounting (G9-2)
	29883.0002	1	Plate, Motor Mounting (G9-2T)
	02311.0000	6	Screw, Slotted Hex Head #10-32 x .50"
	01347.0000	2	Screw, Truss Head SST #6-32 x .38" (SST Grinders)
	01382.0007	2	Screw, Truss Head Blk Locking #6-32 x .38" (Black Grinders)
26	05882.0000	4	Washer, 1.50" Dia.
27	02312.0000	4	Screw, Hex Washer Head .312" -18 X 1.50"
	00987.0000	4	Nut, Lock .312" -18
28	34107.0000	1	Cap, Indicator Adjustment
29	34213.0000	1	Decal, Burr Adjustment

* Indicates the part number listed is for reference only. See DESCRIPTION for possible service replacement.



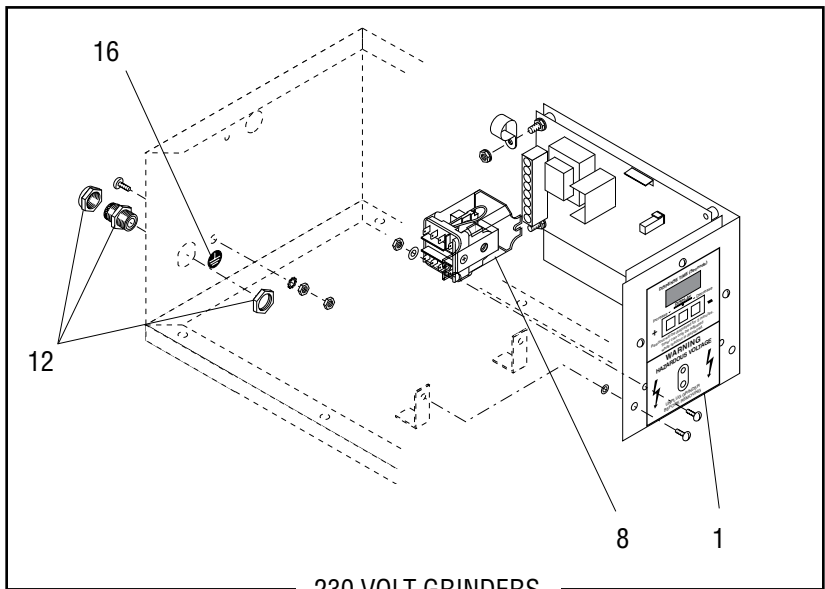
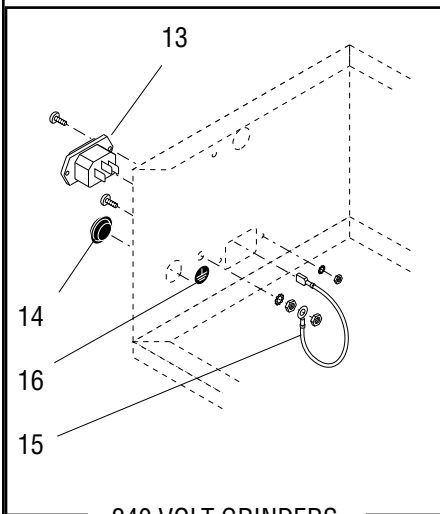
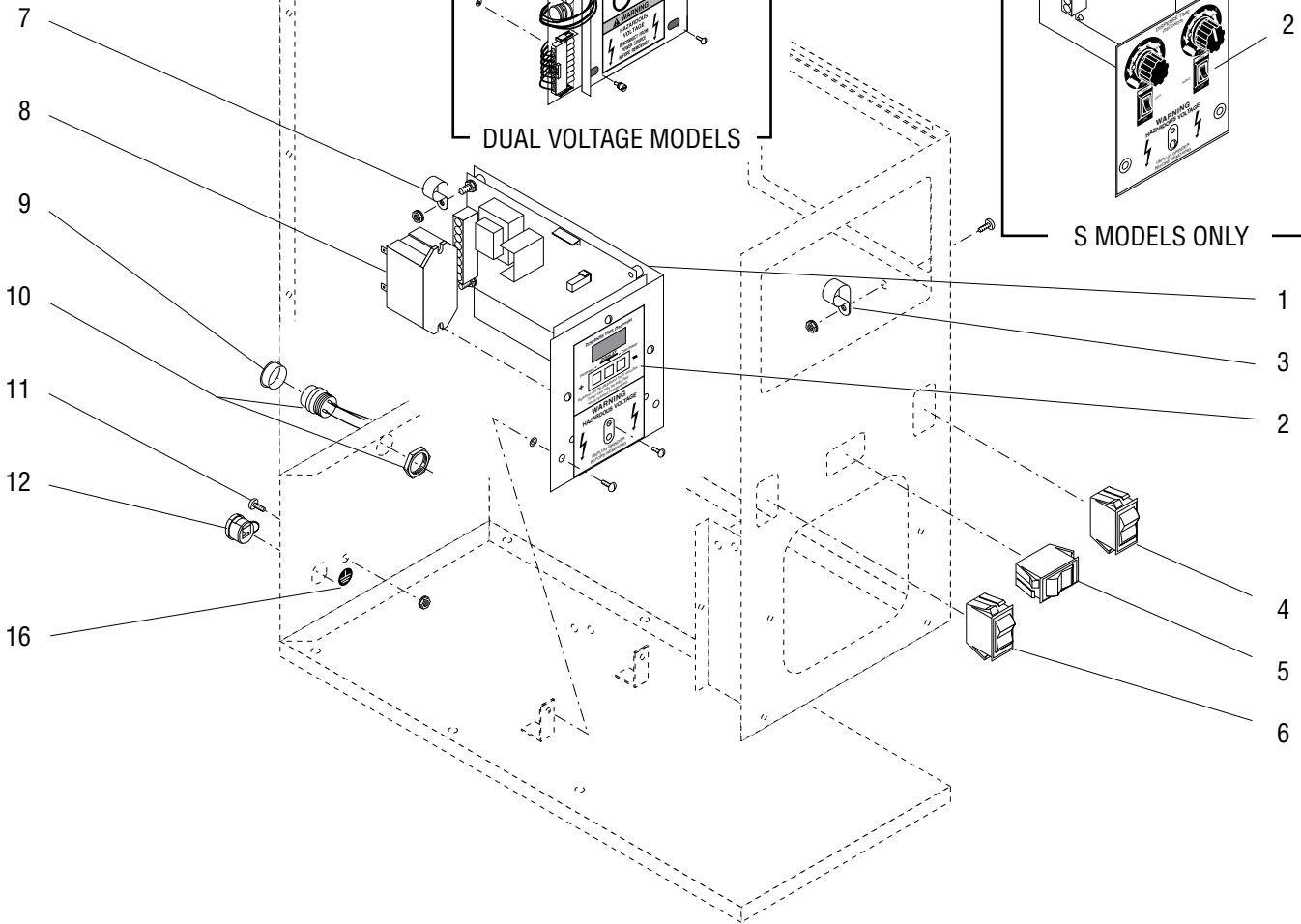
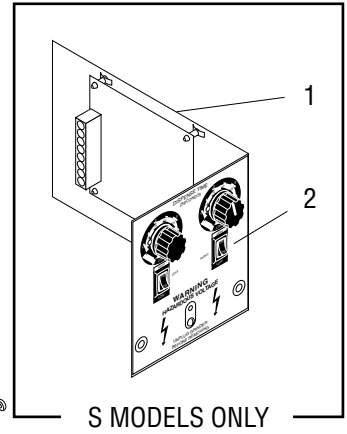
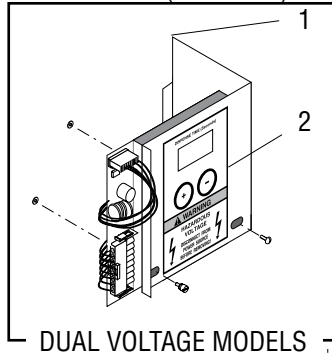
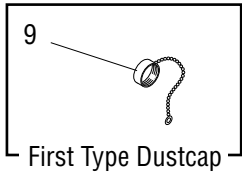
ELECTRICAL CONTROLS

ITEM	PART NO.	QTY.	DESCRIPTION	
1	32064.1000	1	Timer/Bracket Assy (120V Models)	} Includes screws and washers below and item 2
	32064.1001	1	Timer/Bracket Assy (230V Models)	
	25623.1000	1	Timer/Bracket Assy (120V) (S Models only)	
	28062.0000	1	Thumbscrew	
	01315.0000	2	Screw, Truss Head #8-32 x .375"	
	01516.0000	2	Washer, Screw Retaining	
2	-----	1	Decal, Timer (All other Models)	} Order item 1
	-----	1	Decal, Timer (S Models only)	
3	00603.0000	4	Clamp, cable .438" I.D. (2 less used on late grinders)	
	01315.0000	1	Screw, Truss Head #8-32 x .375" (SST Grinders)	
	02322.0002	1	Screw, Truss Head Black #8-32 x .375" (Black Grinders)	
	00970.0000	3	Nut, Keps #8-32 (2 less used on late grinders)	
4	06536.0000	1	Switch, 2 batch selection (SST Grinders with Multi Set Option only)	
	29107.0000	1	Switch, 3 batch selection (SST Grinders with Multi Set Option only)	
5	39178.0000	1	Switch, Hopper Selection	
6	05815.0000	1	Switch, Off/On/Start	
7	05920.0000	1	Clamp, cable .25" I.D.	} All except S Models
	00973.0000	1	Nut, Keps #6-32	
8	37711.1002	1	Relay (120V Grinders)	
	05892.0000	1	Relay (240V Grinders)	
	37711.0001	1	Relay (230V Grinders)	
	01347.0000	1	Screw, Truss Head #6-32 x .375"	
9	-----	1	Dustcap W/Chain (First type not available order second type cap)	
	27657.0000	1	Cap, Dust (Second type)	
10	12274.0002	1	Socket Assy W/Leads, Interface	
11	01327.0000	1	Screw, Ground Truss Head SST #10-32 x .38"	
	00991.0003	1	Nut, Elastic Lock #10-32	
12	01686.0000	1	Bushing, Strain Relief (120V Grinders)	
	05746.0000	1	Bushing, Strain Relief (230V Grinders)	
13	01908.0000	1	Power Connector	} 240 Volt Grinders only
	01362.0000	2	Screw, Oval Head #4-40 x .50"	
	01509.0000	2	Lockwasher, External Tooth #4	
	00937.0000	1	Nut, Hex #4-40	
14	05749.0001	1	Plug, .625" Dia.	
15	21016.0013*	1	Lead, Elect. Grn/Yel 4.0" (Ground)	} 240 Volt Grinders only
	01375.0000	1	Screw, Brass Pan Head #10-32 x .50"	
	01512.0000	1	Lockwasher, External Tooth #10	
	00909.0000	1	Nut, Brass #10-32	
16	00824.0002	1	Decal, Ground	

(Continued)

* Indicates the part number listed is for reference only. See DESCRIPTION for possible service replacement.

(Continued)



ELECTRICAL CONTROLS

ITEM	PART NO.	QTY.	DESCRIPTION
	Note: The following items are not illustrated		
17	24241.1000	1	Wiring Harness, Main (120V Grinders)
	24330.0000	1	Wiring Harness, Main (240V Grinders)
	28126.0000	1	Wiring Harness, Main (230V Grinders)
18	24242.0000	1	Wiring Harness, Switch/Interface
19	-----	1	Wiring Harness, (3 batch selector switch)(Not available)
20	05188.0002	1	Cable, Interface
21	21005.0561	2	Lead, Electrical White/Black 10.0" (Hopper Solenoid to Main Harness)
22	40699.0004	1	Cord Assy, Power 120V
	27728.0001	1	Cord Assy, Power 230V
23	00669.0000	1	Plug, Hole .625" Dia. (Models W/O Interface)
24	22749.0000	2	Pad, Cable Tie (Self adhesive) (Early models)
25	00617.0000	2	Tie, Cable (Early models)

* Indicates the part number listed is for reference only. See DESCRIPTION for possible service replacement.

NUMERICAL INDEX

PART NO.	PAGE NO.	PART NO.	PAGE NO.	PART NO.	PAGE NO.	PART NO.	PAGE NO.
00603.0000	17	02858.0000	9	10768.0000	5	27728.0001	19
00617.0000	19	02999.0000	7	11029.1005	13	28062.0000	17
00622.0000	13	05188.0002	19	11029.1006	13	28126.0000	19
00622.0001	13	05741.0000	7	11180.0000	13	29107.0000	17
00669.0000	19	05742.0000	7	11185.0001	13	29358.0000	9
00718.0000	15	05743.0000	7	11191.0001	13	29883.0001	15
00725.0000	9	05746.0000	17	11192.0000	13	29883.0002	15
00824.0002	17	05749.0001	17	11628.0000	11	32064.1000	17
00909.0000	17	05752.0000	5	12274.0002	17	32064.1001	17
00912.0000	7	05770.0000	7	20545.0000	5	32561.0000	7
00917.0000	7	05771.0000	7	20798.1003	5	32568.0001	7
00937.0000	17	05781.0000	7	20798.1004	5	32569.0001	7
00970.0000	17	05796.0000	13	20798.1005	5	32570.0000	7
00973.0000	17	05809.0000	5	20798.1006	5	33735.0002	5
00987.0000	15	05809.0002	5	20798.1009	5	34107.0000	15
00989.0000	13	05814.0001	7	20798.1011	5	34213.0000	15
00991.0000	11	05815.0000	17	20798.1012	5	35184.0000	13
00991.0002	9	05816.0000	5	20798.1014	5	35233.0000	13
00991.0003	17	05827.0000	7	21005.0561	19	35249.0000	13
01311.0000	9	05839.0000	7	21016.0013	17	35906.0000	13
01311.0003	5	05844.1000	5	21438.0001	9	37204.0000	13
01315.0000	5,17	05852.0001	13	21457.0001	11	37711.0001	17
01317.0000	7,11	05861.1002	13	21620.1004	5	37711.1002	17
01326.0008	7	05867.0000	13	21620.1011	5	37881.0000	5
01327.0000	17	05867.0002	13	22749.0000	19	38278.1002	7
01347.0000	15,17	20631.0000	13	23917.0000	9	38549.0000	11
01362.0000	17	05868.0000	13	23918.0000	9	39178.0000	17
01375.0000	17	05870.0000	13	23919.0000	9	39586.1000	7
01380.0000	5	05876.0000	5,9	23920.0000	11	40699.0004	19
01380.0000	9	05880.0000	13	23921.0000	11	41480.0000	13
01382.0002	5	05881.0000	13	23922.0000	9		
01382.0007	9,15	05882.0000	15	23923.0000	9		
01388.0002	9	05884.0000	7	24237.0000	5		
01403.0000	9,11	05892.0000	17	24239.0000	5		
01501.0000	9	05910.0000	11	24239.0001	5		
01509.0000	17	05911.0001	9	24240.0000	5		
01512.0000	17	05912.1000	11	24241.1000	19		
01516.0000	17	05914.0001	9	24242.0000	19		
01518.0000	5,13	05914.0002	9	24243.1000	9		
01539.0000	13	05916.0000	11	24243.1001	9		
01547.0000	11	05920.0000	17	24243.1002	9		
01686.0000	17	05921.0000	5	24330.0000	19		
01908.0000	17	05939.0003	9	24399.0000	9		
02308.0000	7,9	05939.0004	9	24399.0001	9		
02311.0000	5,15	05951.0000	13	24399.0002	9		
02312.0000	15	05954.0000	13	24399.0004	9		
02313.0000	13	05959.0001	11	25407.0000	5		
02314.0000	13	05960.0000	9	25407.0003	5		
02322.0002	17	05969.0000	9	25407.0004	5		
02323.0000	9	05970.0001	11	25408.0000	5		
02327.0002	13	05995.0000	13	25408.0002	5		
02328.0000	9	06536.0000	17	25408.0003	5		
02330.0000	13	10756.0000	5	25623.1000	17		
02336.0000	11	10756.0001	5	26033.0001	9		
02367.0000	9	10756.0002	5	27657.0000	17		