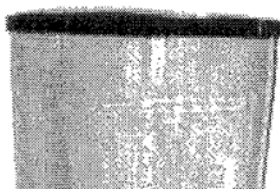


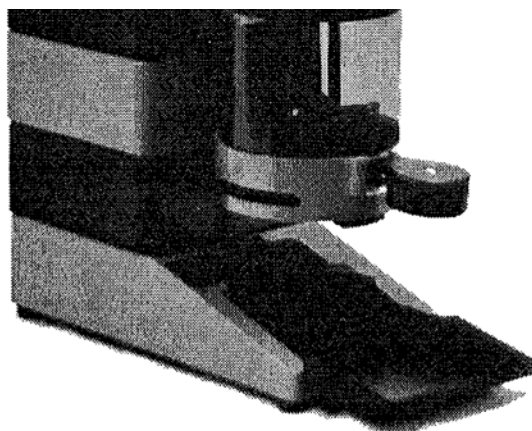
BUNN *Espress*TM

**ESPRESSO/CAPPUCCINO
COFFEE GRINDER**



DISCONTINUED VERSION

**The information in this manual
is no longer current.**



*ES•2G*TM

OPERATING & SERVICE MANUAL

BUNN-O-MATIC CORPORATION

POST OFFICE BOX 3227

SPRINGFIELD, ILLINOIS 62708-3227

PHONE: (217) 529-6601 FAX: (217) 529-6644

Warranty	2
User notice	3
Set Up/Operations	4
Troubleshooting	5
Parts List	6-8
Schematic	9

BUNN-O-MATIC COMMERCIAL GRINDER WARRANTY

Bunn-O-Matic Corp. ("Bunn") warrants the equipment manufactured by it to be commercially free from defects in material and workmanship existing at the time of manufacture and appearing within one year from the date of installation. In addition, Bunn warrants that the grinding burrs will grind coffee to meet original factory screen sieve analysis for three years from date of installation or for 30,000 pounds of coffee, whichever comes first. This warranty does not apply to any equipment, component or part that was not manufactured by Bunn or that, in Bunn's judgement, has been affected by misuse, neglect, alteration, improper installation or operation, improper maintenance or repair, damage or casualty.

THE FOREGOING WARRANTY IS EXCLUSIVE AND IS IN LIEU OF ANY OTHER WARRANTY, WRITTEN OR ORAL, EXPRESS OR IMPLIED, INCLUDING, BUT NOT LIMITED TO, ANY IMPLIED WARRANTY OF EITHER MERCHANTABILITY OR FITNESS FOR A PARTICULAR PURPOSE. The agents, dealers or employees of Bunn are not authorized to make modifications to this warranty or to make additional warranties that are binding on Bunn. Accordingly, statements by such individuals, whether oral or written, do not constitute warranties and should not be relied upon.

The Buyer shall give Bunn prompt notice of any claim to be made under this warranty by telephone at (217) 529-6601 or by writing to Post Office Box 3227, Springfield, Illinois, 62708-3227. If requested by Bunn, the Buyer shall ship the defective equipment prepaid to an authorized Bunn service location. If Bunn determines, in its sole discretion, that the equipment does not conform to the warranty, Bunn shall repair the equipment with no charge for parts during the one year warranty period and no charge for labor by a Bunn Authorized Service Representative during the one year warranty period. If Bunn determines that repair is not feasible, Bunn shall, at its sole option, replace the equipment or refund the purchase price for the equipment.

THE BUYER'S REMEDY AGAINST BUNN FOR THE BREACH OF ANY OBLIGATION ARISING OUT OF THE SALE OF THIS EQUIPMENT, WHETHER DERIVED FROM WARRANTY OR OTHERWISE, SHALL BE LIMITED, AS SPECIFIED HEREIN, TO REPAIR OR, AT BUNN'S SOLE OPTION, REPLACEMENT OR REFUND. Bunn shall not be liable for any other damage or loss, including, but not limited to, lost profits, lost sales, loss of use of equipment, claims of Buyer's customers, cost of capital, cost of down time, cost of substitute equipment, facilities or services, or any other special, incidental or consequential damages.

WARNING

- DO NOT OVERLOAD CIRCUIT.
- ALWAYS ELECTRICALLY GROUND THE CHASSIS OR ADAPTOR PLUG.
- DO NOT DEFORM PLUG OR CORD.
- FOLLOW NATIONAL AND LOCAL ELECTRICAL CODES.
- KEEP COMBUSTIBLES AWAY.

FAILURE TO COMPLY RISKS EQUIPMENT
DAMAGE, FIRE OR SHOCK HAZARD.

**READ THE ENTIRE OPERATING
MANUAL INCLUDING THE LIMIT
OF WARRANTY AND LIABILITY
BEFORE BUYING OR USING
THIS PRODUCT**

© 1984 BUNN-O-MATIC CORP. PN: 986

00986.0000

Operating controls

- OFF- Placing the switch in this position stops operation of the grinder. This is the recommended position for the switch when the grinder is left unattended.
- ON- Placing the switch in this position starts the grinder motor and grinds the beans. The grinder has a automatic shut off feature when the ground coffee chamber is full, eliminating turning the switch on and off whenever ground coffee is needed.

Initial grinder setup

1. Plug the Grinder into a compatible 15 amp, single phase, 60hz Refer to the data plate located on back of the grinder to make sure the data plate voltage is compatible with outlet voltage.
2. Place the ON/OFF switch (18) in the "ON" position.
3. Press the Adjustment Wheel Lock Pin down and turn the Grinder Adjustment Wheel (3) clockwise until you start to hear a whining noise, caused by the Grinding Burrs making contact. While holding the Adjustment Wheel Lock Pin down, turn the Grinder Adjustment Wheel (3) counterclockwise 10 positions. (This is considered a starting point)
4. Fill the Hopper (1) with whole bean coffee.

NOTE: Pull the key, on the neck of the hopper, to the fully open position.

5. Place the ON/OFF Switch (18) in the "ON" position until the Grounds Chamber (49) has reached the desired fill level.
6. Place a cup under the Grinder Chamber (49) and pull the Indexing Lever (32) several times, this will insure a proper measurement in step 7. Pour the dispensed grounds back into the Grinder Chamber (49).
7. Once again, place the cup under the Grinder Chamber (49) and pull the Indexing Lever (29) one time.
8. Adjust the Dispense Adjustment Screw (45) to provide the desired amount of ground coffee. The approximate range of adjustment is 5-12 grams per pull of the Indexing Lever.

NOTE: The amount of ground coffee dispensed is adjustable by taking the Grinder Chamber cover (38) off and tuning the Grinder Dispense Adjustment Screw (35) clockwise for less coffee and counterclockwise for more coffee.

Dispensed amount can not exceed 7.5 grams total per indexing lever pull.

Single full cup = 1 index lever pulls (6-7 grams total)

Double full cups = 2 index lever pulls (12-14 grams total)

or

Single full cup = 2 index lever pulls (9-10 grams total)

Double full cups = 3 index lever pulls (14-15 grams total)

* These are to be used as guide lines only. Dispensed amounts can be set to personal taste.

The grind consistency is adjustable by turning the Grinder Adjustment Wheel (3) clockwise for a finer grind and counterclockwise for a coarser grind. Refer to the "Brewing" section in the Espresso brewer manual for tips on achieving a perfect cup of Espresso.

Coffee grinding and dispensing

1. Visually inspect the Hopper (1) for an adequate supply of whole bean coffee.
2. Place the ON/OFF Switch (18) in the "ON" position. When the grind chamber (49) has reached the maximum level, the grinder will automatically stop grinding.
3. Place the appropriate filter holder (single cup or double) on the Coffee Alignment Stop (67) and pull the Indexing Lever (32).

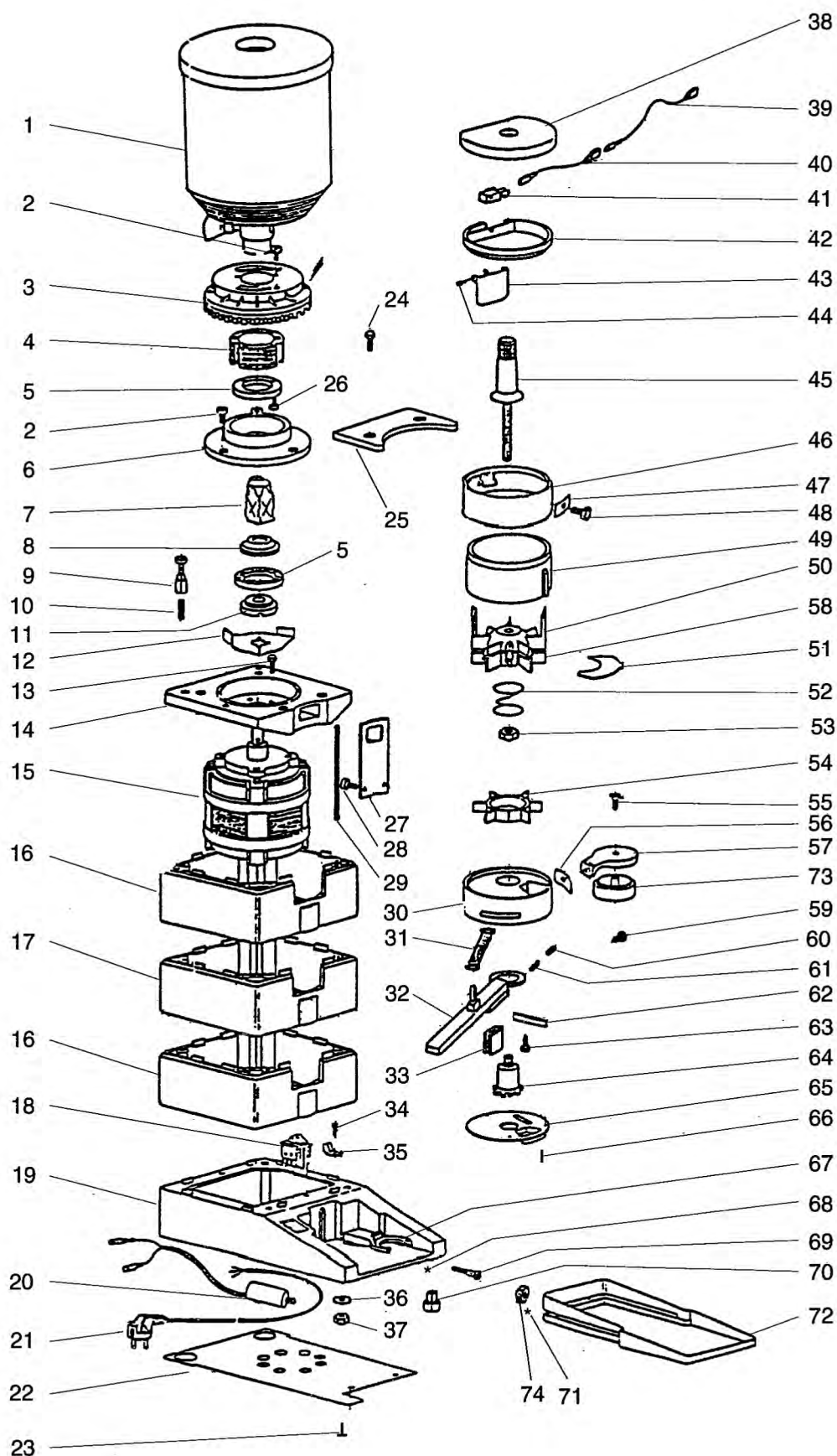
Cleaning

The use of a damp cloth rinsed in any mild nonabrasive, liquid detergent is recommended for cleaning all surfaces on the grinder. Care should be taken not to scratch the plastic parts with any abrasive material.

This troubleshooting guide is provided to suggest probable causes and remedies for the most likely problems encountered. If the problem remains after exhausting the troubleshooting steps, contact the Bunn-O-Matic Technical Service Department.

- Warning**
1. Exercise extreme caution when servicing electrical equipment.
 2. Unplug the grinder when servicing, except when electrical tests are specified.
 3. Follow recommended service procedures.
 4. When servicing is completed, replace all protective shields and safety notices.

Problem	Probable cause	Remedy
Grinder will not start.	No power or incorrect voltage	Plug in the grinder. Check the voltage at the wall outlet with a voltmeter. It must be 120vac or 208-240vac (refer to the data plate located on back of the grinder)
	ON/OFF switch	Press the switch to the "ON" position
	Automatic shut off switch	Remove ground coffee from under flapper allowing switch to activate grinder motor.
Grinder will not shut off.	ON/OFF switch	Move the switch to the "OFF" position.
Grinder starts, but will not dispense.	Hopper	Coffee must be poured in to the hopper before grinding.
	Entrance to grind chamber is blocked.	Foreign materials must not block the opening at the bottom of the hopper.
	Grinder set for too fine of a grind.	Rotate grind adjustment wheel to a coarser setting



1	GRINDER HOPPER (WHOLE BEAN)	22582.0000
2	ADJUSTMENT WHEEL MTG. PLATE SCREW	24006.0402
3	GRINDER ADJUSTMENT WHEEL	23064.0000
4	UPPER BURR MOUNT SECTION	23065.0000
5	GRINDER BURRS (PAIR)	22583.0000
6	ADJUSTMENT MOUNT PLATE	23066.0000
7	BURR RETAINING NUT	23067.0000
8	BURR RETAINER NUT	23068.0000
9	ADJUSTMENT WHEEL LOCK PIN	23069.0000
10	ADJUSTMENT WHEEL LOCK PIN SPRING	23070.0000
11	BURR RETAINER (LOWER)	23071.0000
12	COFFEE DISPENSE AUGER	23072.0000
13	SCREW-MOTOR MOUNT	24007.0401
14	MOTOR MOUNT-TOP	23073.0000
15	MOTOR (220V)	23074.0000
	MOTOR (120V)	23504.0000
16	HOUSING SECTION (TOP AND BOTTOM)	23075.0000
17	HOUSING SECTION (MIDDLE)	23076.0000
18	GRINDER SWITCH (ON/OFF)	22585.0000
19	BASE	23077.0000
20	CAPACITOR - MOTOR 12MF	22584.0000
21	CORDSET (220V)	23078.0000
	CORDSET (120V)	01637.0000
22	BASE COVER (BOTTOM)	23079.0000
23	STRAIN RELIEF SCREW	24004.0700
24	SCREW	24004.0701
25	COVER - MICROSWITCH	23080.0000
26	SCREW - BURR MOUNT	24006.0403
27	CHAMBER MOUNTING PLATE	23081.0000
28	SCREW (CHAMBER MOUNTING PLATE)	24007.0400
29	THREADED ROD	23802.0000
30	GRINDER CHAMBER - LOWER	23083.0000
31	INDEXING LEVER RETURN SPRING	22597.0000
32	INDEXING LEVER	22594.0000
33	INDEXING LEVER GUIDE	23084.0000
34	SCREW - STRAIN RELIEF	24005.0700
35	STRAIN RELIEF	23085.0000
36	WASHER	24027.0000
37	NUT - ROD RETAINER	24047.0101
38	TOP COVER - GRINDER CHAMBER	23086.0000
39	WIRE - MICROSWITCH	23087.0000
40	WIRE - MICROSWITCH	23088.0000
41	MICROSWITCH - AUTOGRIND	23089.0000
42	RIM - TOP GRIND CHAMBER	23090.0000
43	PLATE - AUTO GRIND	23091.0000
44	COTTER PIN	23092.0000
45	DISPENSE ADJUSTMENT SCREW	23093.0000
46	GRINDER CHAMBER - UPPER	23094.0000
47	NUT - UPPER CHAMBER MOUNT	23182.0000
48	SCREW GRINDER CHAMBER	24006.0001

49	GRIND CHAMBER - CLEAR	23095.0000
50	DISPENSE WHEEL (UPPER)	22587.0000
51	CHAMBER PROPORTIONING PLATE	22590.0000
52	COIL SPRING (DISPENSE WHEEL)	22591.0000
53	NUT (INDEXING COG)	24050.0100
54	DISPENSE WHEEL (LOWER)	22589.0000
55	SCREW (COFFEE PRESS MOUNT)	24004.0600
56	NUT - PRESS MOUNT	23181.0000
57	COFFEE PRESS - TOP	23096.0000
58	DISPENSE WHEEL (MIDDLE)	22588.0000
59	SCREW (COFFEE PRESS MOUNT)	24007.0600
60	CATCH (INDEX LEVER)	22595.0000
61	CATCH SPRING (INDEX LEVER)	22596.0000
62	DISPENSE LEVER LEAF SPRING	23097.0000
63	SCREW (LOWER DISPENSE CHAMBER LUG MTG.)	24004.0700
64	INDEXING COG	23098.0000
65	BOTTOM PLATE - GRIND CHAMBER	23099.0000
66	SCREW (BOTTOM COVER CHAMBER BASE)	24004.0700
67	COFFEE ALIGNMENT STOP	23100.0000
68	WASHER (NOT ILLUSTRATED)	24027.0000
69	SCREW (ALIGNMENT STOP)	24007.0301
70	RUBBER FOOT (BASE)	23101.0000
71	NUT CAPACITOR MOUNT (NOT ILLUSTRATED)	24048.0300
72	CATCH TRAY	23102.0000
73	COFFEE PRESS - LOWER	23103.0000
74	NUT - ROD RETAINER	24047.0101

